



ZEBRA



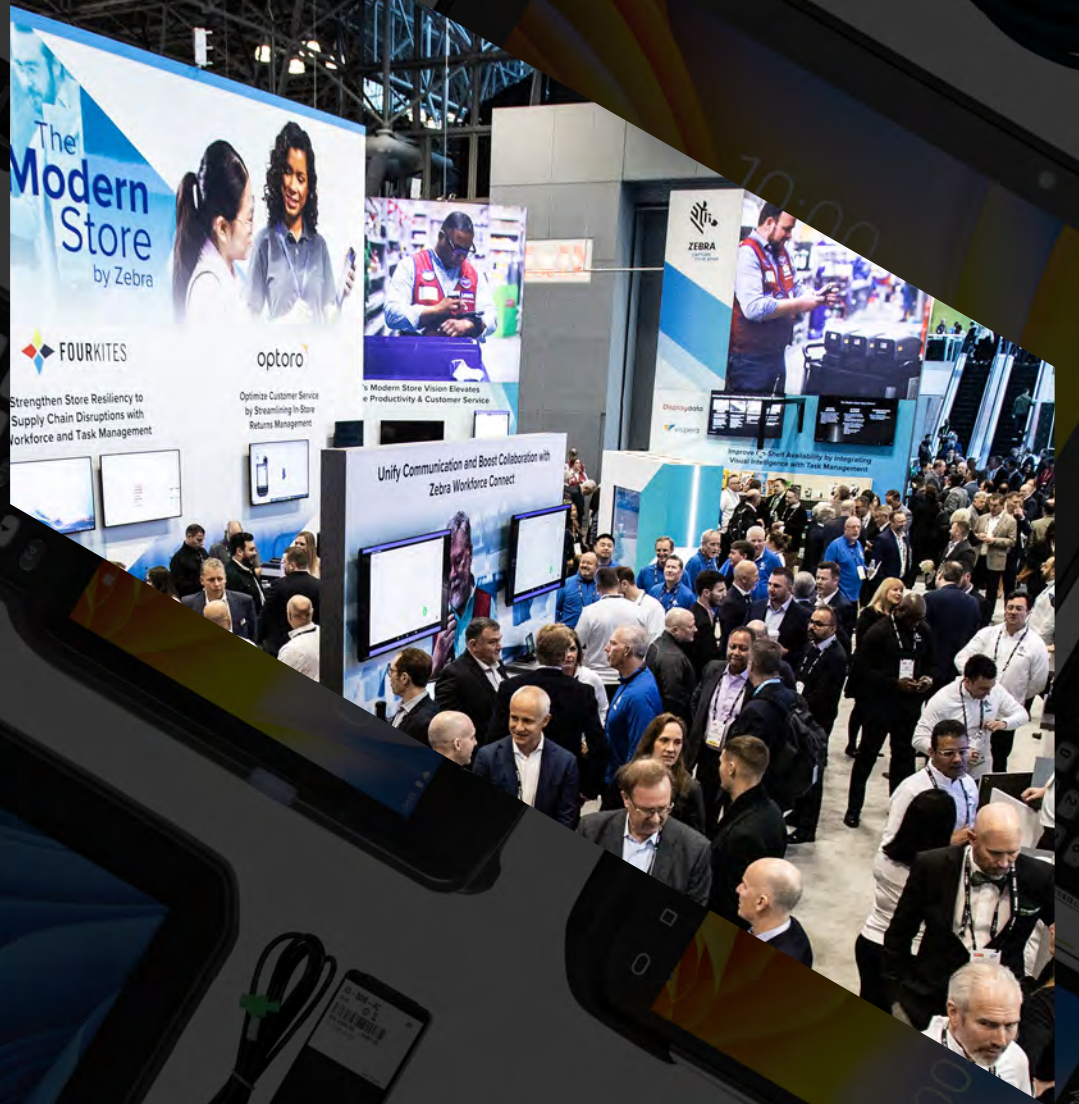
# Portfolio Guide

2 3 / 2 4



Business  
solutions from  
**A to Zebra**





## YOU THOUGHT YOU KNEW ZEBRA. BUT THERE'S SO MUCH MORE TO SEE.

For more than 50 years, Zebra has delivered innovative solutions and technologies that help organizations manage their inventories and activities—from barcode printers and scanners, to RFID tags and readers, to mobile and wearable computers, to enterprise software and more.

Many of our customers have come to depend on Zebra products for their day-to-day operations and year-to-year success. But even our most loyal champions may not fully appreciate everything Zebra has to offer.

Every business in every industry will find innovations in our portfolio that will help them operate more efficiently and effectively. Products designed to improve visibility and decision-making. Solutions for achieving sustainability and regulatory compliance.

Examine your capabilities today and consider how you want your business to grow—then ask your Zebra representative how we can help you get there. With over 10,000 partners in over 100 countries, we are where you need us to be, equipped with the local knowledge, deep capabilities and industry experience required to deliver real value to your business.





# TABLE OF CONTENTS

## A Performance Edge in Any Environment

### Zebra DNA

#### Barcode Scanners

- 10 General Purpose Scanners
- 12 Industrial Scanners
- 13 Single-Plane and Multi-Plane Scanners

#### Mobile Computers and Tablets

- 14 Handheld Computers
- 19 Interactive Kiosks
- 20 Wearable Computers and Devices
- 22 Rugged Enterprise Tablets
- 23 Healthcare Tablets
- 23 Vehicle-Mounted Computers
- 24 Accessories and Supplies
- 24 Zebra Intelligent Cabinet Portfolio\*
- 25 Mobile Computer Software Solutions

#### Printers

- 26 Industrial Printers
- 28 Desktop Printers
- 30 Mobile Printers
- 32 Card Printers
- 34 RFID Printers/Encoders
- 36 Printer Supplies

## Environmental Sensors

- 37 Electronic Sensors and Indicators

## Healthcare Solutions

- 38 Mobile Computers and Tablets
- 40 Scanners
- 42 Printers

## Location and Tracking

- 44 Handheld RFID Readers and RFID-Enabled Devices
- 46 Integrated RFID Portals\*
- 48 Fixed RFID Readers and Infrastructure
- 50 Antennas
- 52 Reader Software
- 54 Location Technologies
- 56 Zebra MotionWorks

## Machine Vision and Fixed Industrial Scanners

- 58 Fixed Industrial Scanners
- 60 Smart Sensors and Cameras
- 62 3D Sensors
- 62 Vision Controllers
- 62 Machine Vision Cameras
- 63 Frame Grabbers
- 63 I/O Cards
- 64 Zebra Aurora™ Software Suite

## Environmental Responsibility and Sustainability

### Autonomous Mobile Robots\*

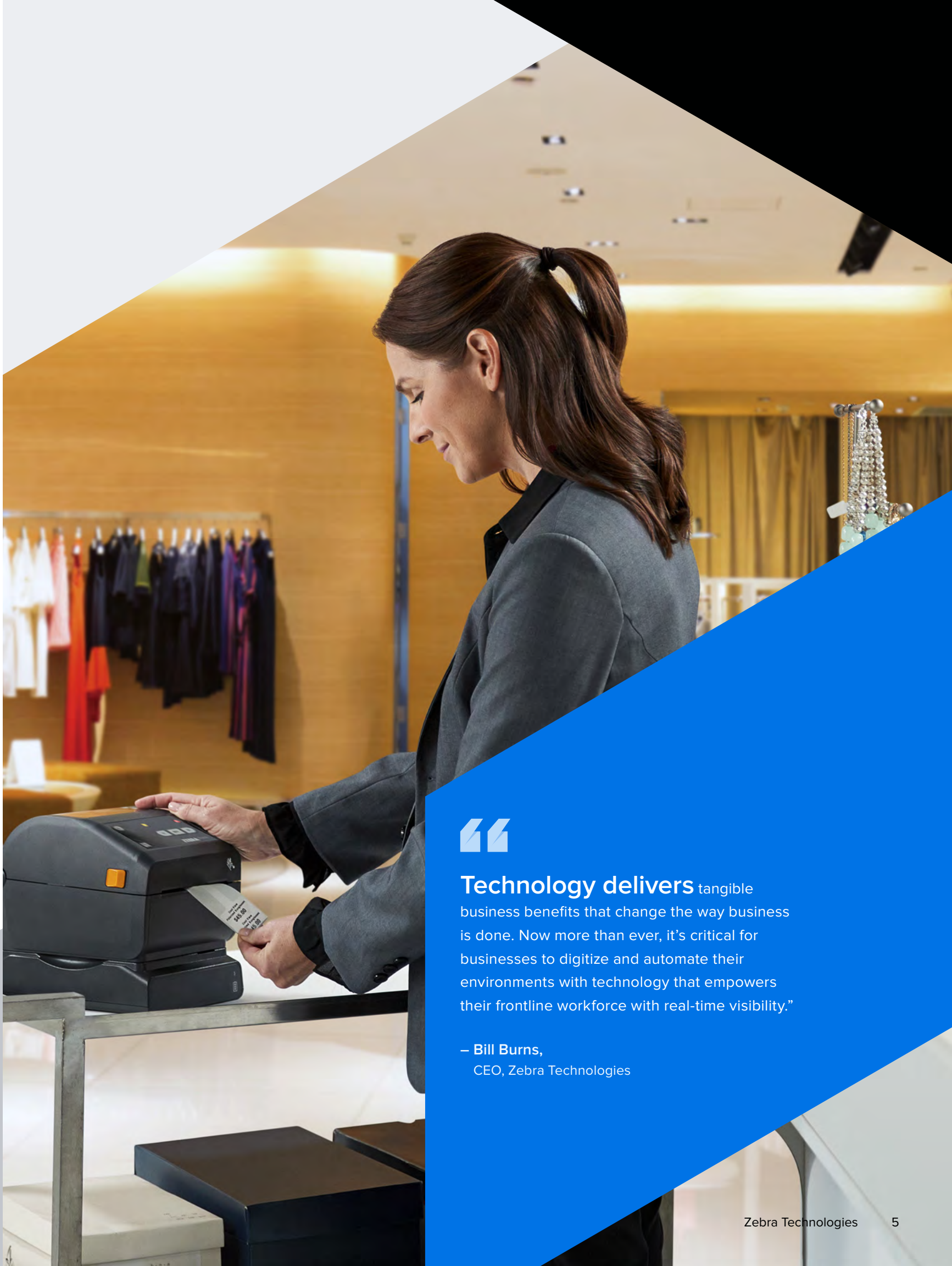
- 66 Fetch AMRs
- 67 Symmetry Software

### Software Solutions

- 68 Workcloud Workforce Optimization Suite
- 68 Workcloud Enterprise Collaboration Suite
- 68 Workcloud Inventory Optimization Suite
- 69 Workcloud Demand Intelligence Suite

### Global Services

- 70 Professional Services
- 70 Zebra OneCare Maintenance Plans
- 70 VisibilityIQ Foresight™
- 70 Circular Economy



**Technology delivers** tangible business benefits that change the way business is done. Now more than ever, it's critical for businesses to digitize and automate their environments with technology that empowers their frontline workforce with real-time visibility."

— Bill Burns,  
CEO, Zebra Technologies



# A PERFORMANCE EDGE IN ANY ENVIRONMENT



## TRANSPORTATION AND LOGISTICS

Deliver nonstop service from  
the first mile to the last.



## MANUFACTURING

Increase productivity and  
profitability on the plant floor.



## HEALTHCARE

Streamline care delivery with  
enhanced workflows and reduced  
workarounds.



## RETAIL

Accelerate retail transformation  
and improve customer  
experiences.



## HOSPITALITY

Enhance guest experience and  
increase operational efficiency.



## WAREHOUSING

Manage inventory across your  
supply chain.



## FIELD SERVICE AND UTILITIES

Empower your team wherever  
the job takes them.



## GOVERNMENT AND PUBLIC SAFETY

Improve services and safety.



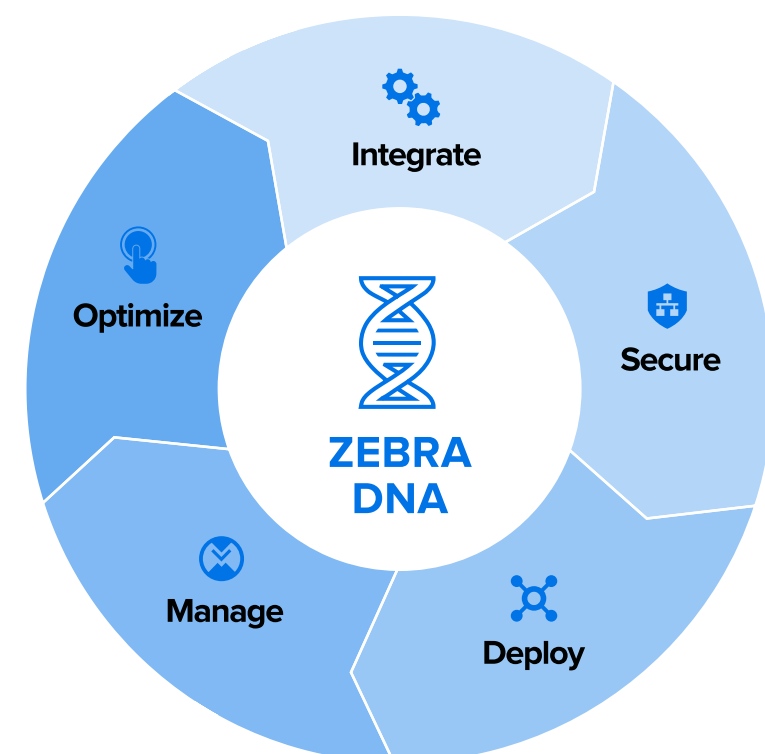


# ZEBRA DNA

## Your built-in advantage.

With advances in technology continuously accelerating, it's the software inside your Zebra devices that determines whether they remain relevant, agile and high-performing with a strong ROI over their entire lifecycle. That's why Zebra devices come with a built-in advantage: **Zebra DNA**.

Made of applications, utilities and tools, Zebra DNA is what delivers the unmatched experiences your team gets from every Zebra device, from mobile computers to scanners, printers and more. With Zebra DNA, you can deal with all that's known and unknown on the road ahead.



Behind every great piece of hardware is an even better set of software tools. Learn more about Zebra DNA.

## INTEGRATE

Empower developers to create and integrate apps for multiple workflows.

## SECURE

Give IT the ability to protect your systems from emerging cyber threats.

## DEPLOY

Accelerate and simplify deployment for small or large groups of devices.

## MANAGE

Enable IT to manage devices remotely and conveniently, anywhere.

## OPTIMIZE

Help workers complete more tasks in less time with easy, intuitive controls.

We have committed decades to researching and developing Zebra DNA. We've run thousands of simulations and studied even more real-world use cases to understand the journey each Zebra device will take once it leaves our manufacturing facilities and warehouses.





## General Purpose Scanners

Jobs may differ, but workers' needs remain the same: split-second, fail-proof, error-proof scanning. Give them scanners made to increase productivity, no matter what their environment or challenge.



Use our Scan Selector tool to find out which scanners are right for your specific industry, environment and requirements.



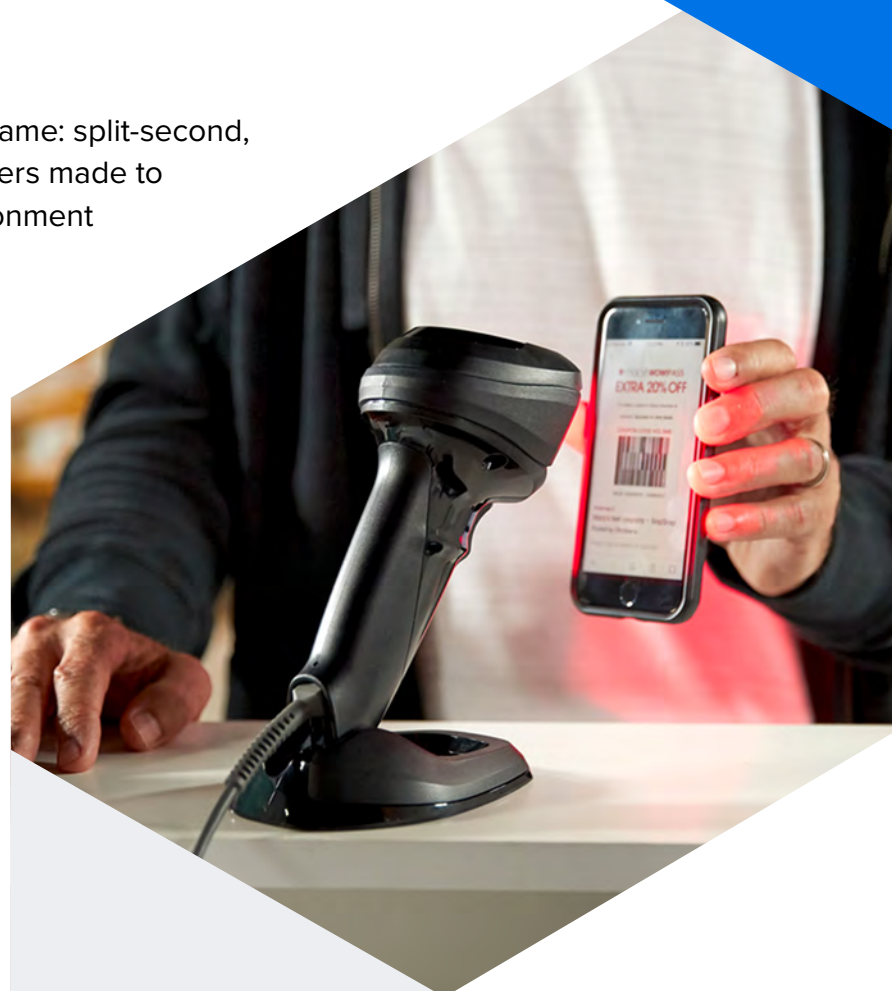
### DS9900 Series Hybrid Handheld/Hands-Free 1D/2D Scanner

#### One-of-a-kind hybrid design

Maximum flexibility and superior comfort, designed to boost productivity at the POS.

- Hybrid design offers handheld and hands-free flexibility
- Supports Digimarc™ to speed checkout
- Elevated electronics protect the device from casual spills

#### INDUSTRY MARKET:



**Zebra scanners** have been developed and refined through more than **50** years of field-proven innovation, with options for every purpose and price point.

 For more information, visit [www.zebra.com](http://www.zebra.com) or contact a sales associate.

ZEBRA PORTFOLIO GUIDE | 2024



#### DS2200 Series Handheld 1D/2D Scanners

The benefits of 2D imaging at an outstanding value with minimal investment.

- Corded and cordless models
- Average 21% faster for a variety of checkout tasks compared to similar models\*

#### INDUSTRY MARKET:



#### DS4600 Series Handheld 1D/2D Scanners

Keep checkout lanes, manufacturing lines and warehouses running smoothly.

- A model for every need in your organization
- 14% faster scanning through plexiglass during checkout compared to the nearest competitor\*

#### INDUSTRY MARKET:



#### DS8100 Series Handheld 1D/2D Scanners

Ideal for retailers willing to invest in increasing transactions per shift and reducing customer wait time.

- Choice of desktop or presentation cradle
- Up to 33% faster scanning in handheld mode compared to similar models\*

#### INDUSTRY MARKET:



#### DS9300 Series Hands-Free 1D/2D Scanners

A fit-anywhere form factor coupled with stylish aesthetics.

- Designed for hands-free scanning but can be handheld
- Compact form factor ideal for limited checkout counter real estate

#### INDUSTRY MARKET:



#### CS60 Companion 1D/2D Scanner

Easily converts between corded and cordless, hands-free and handheld operation.

- One device can be used for multiple workflows
- Pocketable and wearable when mobility is essential

#### INDUSTRY MARKET:



## When you choose

Zebra barcode scanners, your workers get the performance, comfort and ease of use they need to get the job done right—and fast.

**Zebra DataCapture DNA** covers every stage of your scanning workflows, ensuring that your scanners evolve with your business needs.





## Industrial Scanners

Our product design teams work alongside customers like you, observing how they use scanners in warehouses, retail stores and manufacturing plants. From our rich insights, we designed scanners built to elevate your performance.



See how a supermarket chain used Zebra tech to speed produce scans and improve checkout accuracy.



### DS3600 Series Ultra-Rugged Barcode Scanners

**Be unstoppable with relentless performance**

Takes a beating and still scans faster and farther.

- Coded and cordless models
- Multiple data capture models: standard range, high density, DPM, extended range and more
- Built to withstand extreme heat, cold and humidity
- IP65 and IP68 sealing

**INDUSTRY MARKET:**



### DS457 Fixed Mount 1D/2D Scanner

Fast scanning from the retail POS and airport boarding gate to the manufacturing production line.

- Designed for small spaces with a near-zero footprint
- Four data capture models: standard range, high density, driver's license parsing, direct part marks

**INDUSTRY MARKET:**



## Single-Plane and Multi-Plane Scanners



### MP7000 Multi-Plane 1D/2D Scanner

Bust lines with next-generation POS scanning, color camera imaging and live video.

- Digimarc™ barcode support
- Image capture capability for checks, receipts, utility bills and more

**INDUSTRY MARKET:**



### SP72 Series Single-Plane Scanners

Speed up and simplify your checkout line experience with in-counter and on-counter scanning.

- Best-in-class scan performance with PRZM Intelligent Imaging Technology
- 2MP color camera option to enable vision-based applications

**INDUSTRY MARKET:**







## Handheld Computers

So smart, these multi-taskers speed up work. And a familiar interface is one you'll immediately recognize and know how to use. But unlike consumer devices, they won't fail you. They're made for work—enterprise-rugged and ultra-secure.



Zebra mobile computers allow workers to access the information, applications and people they need to get the job done.



### MC9400/MC9450 Mobile Computer

**The next evolution loaded with the latest mobile technologies**

With the new Qualcomm platform offering 2.5x more processing power and 50% more RAM than the MC9300.

- With the new SES8 Extended Range Scan Engine with Intellifocus™ technology, scan barcodes in hand and over 100 feet (30.5 meters) away.\*
- New optional 7,000 mAh BLE-enabled battery to locate lost devices even when powered down or low in battery.
- The latest in wireless connectivity with Wi-Fi 6E and 5G data-only cellular.
- Fully backward compatible with all MC9300 accessories without the need for adapters or replacements of any kind.

#### INDUSTRY MARKET:



## Mobile technology

has become almost mandatory in every industry worldwide. Every worker, regardless of their job, is now expected to be connected.



For more information, visit [www.zebra.com](http://www.zebra.com) or contact a sales associate.



### MC9300 Mobile Computer

The latest evolution of the world's best-selling and most trusted Android enterprise mobile computer.

- Multiple model options: non-incendive, freezer, DPM (Direct Part Mark)
- Backlit keypad with seven field-replaceable, ultra-rugged keyboard options

#### INDUSTRY MARKET:



### MC3300ax Mobile Computer

The highly successful and widely adopted MC3000 series delivers unmatched versatility and flexibility.

- Two form factors: straight shooter, gun/pistol grip
- Three different keyboard options: numeric, function numeric, alphanumeric

#### INDUSTRY MARKET:



### MC2200/2700 Mobile Computers

Affordable and versatile mobility for any worker, anywhere.

- Wi-Fi and cellular to connect workers
- Two devices in one—brick and gun

#### INDUSTRY MARKET:



### TC8300 Mobile Computer

Revolutionary enterprise mobile computer designed to boost productivity and reduce user fatigue.

- Advanced industrial barcode scanning, from 3 inches to 70 feet
- Supports ease of Android migration with All-Touch Terminal Emulation

#### INDUSTRY MARKET:



### MC20\*\*

All-day comfort and ease of use.

- Small and lightweight for all-day comfort
- Angled scanner
- Ergonomic design and optimized keypad

#### INDUSTRY MARKET:



### Zebra Mobility DNA

keeps your mobile computers updated and optimized for peak performance.

\* Printing resolution, contrast and ambient light dependent.

\*\* Available in Japan only.







## Handheld Computers *(Continued)*

When you choose Zebra, you're in good company. Many of the world's largest organizations trust Zebra enterprise mobile computers to keep their businesses going, including many Fortune 500 companies.



Explore  
Point-of-Sale  
solutions.



### TC53/TC58 Mobile Computers

A new generation of Zebra mobile computers designed to do more with new hardware and software innovations that redefine mobile computing performance.

- Advanced 6-inch Full HD+ edge-to-edge display
- Withstands multiple 5-foot (1.5-meter) drops to tile over concrete across temperature range
- Four battery options: standard, extended capacity, BLE and wireless charge
- Wi-Fi 6E/5G

#### INDUSTRY MARKET:



### Fast, convenient

Zebra Point-of-Sale solutions  
help reduce wait times and  
increase customer satisfaction.



For more information, visit [www.zebra.com](http://www.zebra.com) or contact a sales associate.



### TC15/TN28 Mobile Computers\*

Rugged mobile computer with a new level of affordability built for your supply chain.

- 5G, ultra-long-lasting battery, superb ergonomics
- Integrated scanner and 6.5-inch bright screen

#### INDUSTRY MARKET:



### TC21/TC26 Mobile Computers

With multiple configurations at different price points, you pay only for the features your application requires.

- 5-foot (1.5-meter) drop with optional protective boot
- 13 MP rear camera, 5 MP front camera

#### INDUSTRY MARKET:



### TC22/TC27 Mobile Computers

Smartphone styling and pricing with big business features that boost productivity and customer service quality.

- Choice of standard or advanced range scanner, Wi-Fi 6/6E, 5G, CBRS
- Value-adds: workstation, POS, RFID, digital wallets and tap-to-pay ready

#### INDUSTRY MARKET:



### TC52x/TC52ax/TC57x Mobile Computers

The ultimate in rugged enterprise-class mobile computers with innovative features for indoor and outdoor use.

- High-resolution 5-inch Full HD touch screen
- Complete cellular network flexibility with support for carrier aggregation (TC57x only)
- Wi-Fi 6 (TC52ax)

#### INDUSTRY MARKET:

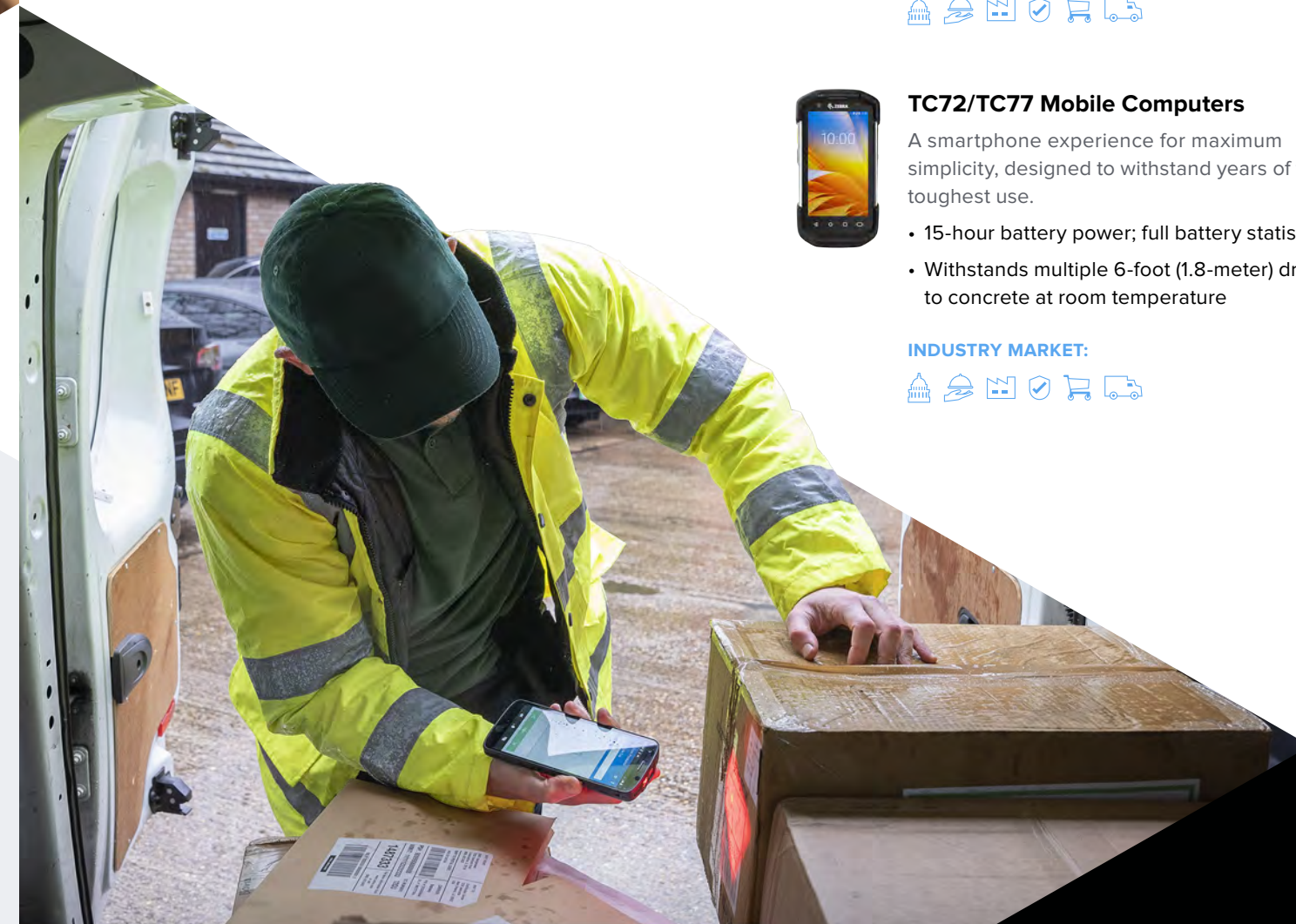


### TC72/TC77 Mobile Computers

A smartphone experience for maximum simplicity, designed to withstand years of the toughest use.

- 15-hour battery power; full battery statistics
- Withstands multiple 6-foot (1.8-meter) drops to concrete at room temperature

#### INDUSTRY MARKET:



\* Available in select countries. TN28 available in China only.





## Handheld Computers *(Continued)*

Decades of innovation enable Zebra to offer features and benefits no other manufacturer can provide. We design and optimize every mobile computer for real-world usability and harsh environments.



### TC73/TC78 Mobile Computers

Ultra-rugged Wi-Fi 6E/5G mobile computers reimagined to support the new generation of mobile solutions.

- Withstands multiple 10-foot (3.05-meter) drops to concrete at room temperature
- Advanced 6-inch Full HD+ edge-to-edge display
- Four battery options: standard, extended capacity, BLE and wireless charge

#### INDUSTRY MARKET:



### EC50/EC55 Enterprise Mobile Computers

Maximize personal productivity with a smartphone-style device that's all business.

- 5-inch display, PTT, two-way radio and PBX
- Optional integrated scanner

#### INDUSTRY MARKET:



### TC15/TN28 Mobile Computers\*

Rugged mobile computer with a new level of affordability built for your supply chain.

- 5G, ultra-long-lasting battery, superb ergonomics
- Integrated scanner and 6.5-inch bright screen

#### INDUSTRY MARKET:



### PS20 Personal Shopper

The ultimate personal shopping solution for your customers and store associates in one device.

- Scan as you shop, supports hands-free scanning
- Inventory management, click and collect

#### INDUSTRY MARKET:



### PS30 Personal Shopper

Improve shopper experiences and drive customer loyalty with this all-new scan-as-you-shop solution.

- Flowing modern ergonomics
- Tap-to-pay and digital wallet-ready
- Enhanced location sensor data for actionable shopper analytics

#### INDUSTRY MARKET:



For more information, visit [www.zebra.com](http://www.zebra.com) or contact a sales associate.

## Interactive Kiosks

When you need the capabilities of a tablet but not the mobility, these fixed, Android-based kiosks take customer engagement to a whole new level, giving customers the best of online and in-store shopping, with the convenient self-service capabilities they expect.



Read about how Zebra interactive kiosks give every shopper the concierge-style service of their dreams.



### CC6000 10-inch Customer Concierge Kiosk

#### Engage customers for an exceptional shopping/service experience

Gain tablet-like performance and connectivity for fixed installations.

- Use for digital signage, product demos or Android interactive apps
- Integrated 2D scanner and Full HD camera for remote video chat
- Supports Wi-Fi, Bluetooth, NFC and Ethernet
- Mount horizontally or vertically with floor-facing 2D scanner

#### INDUSTRY MARKET:



### CC600 5-inch Multi-Touch Kiosk

Bring convenience, speed and customer satisfaction to shopping by enabling self-service in every aisle.

- Quickly install Android app availability wherever it is needed
- Supports Wi-Fi, Bluetooth® and Ethernet
- Compact, affordable and easy to install with floor-facing 2D scanner

#### INDUSTRY MARKET:



\* Available in select countries. TN28 available in China only.

\*\* According to blog post written by Mike Withers, July 2021, citing a Bain & Company report.





# Wearable Computers and Devices

The rush is on. Free up your workers to handle more, and watch their accuracy and productivity skyrocket. Hands down, these are the best hands-free solutions.



Wearables have been hot for a while now, their popularity gleaned from the freedom they provide users and the productivity they deliver (which contributes to the bottom line).



## WS50 Android Wearable Computer

World's smallest all-in-one Android enterprise-class wearable mobile computer

First-of-its-kind, rugged, enterprise display improves productivity and task accuracy. Also available with a UHF reader for RFID needs.

- One-piece wearable; workers only need to wear one device to capture and access data, instead of a host mobile computer and ring scanner
- With different wearing styles: on the wrist, two fingers, or the back of the hand
- Android OS AOSP
- Advanced enterprise-class scanner for intense barcode scanning
- Integrated audio and PTT hardware ready

### INDUSTRY MARKET:



The only way people can move as fast as humanly possible in a warehouse is if they have their hands totally free to pick items, pack and pick up boxes, operate equipment and more."

— Samuel Gonzales,  
Director of Global Systems  
and Solutions, Ivanti



For more information, visit [www.zebra.com](http://www.zebra.com) or contact a sales associate.



## WT6300 Wearable Computer

Hands-free wearable computer empowers your workers to keep pace with the e-commerce explosion.

- Flexible data entry with touchscreen or detachable keypad accessories
- Built rugged for use in any environment, including the freezer (-22°F/-30°C)

### INDUSTRY MARKET:



## RS6100 Bluetooth Ring Scanner

The industry's most advanced, most rugged Bluetooth ring scanner.

- Multi-color LED line-of-sight sorting
- Advanced scanning technology and PRZM Intelligent Imaging

### INDUSTRY MARKET:



## RS5100 Bluetooth Ring Scanner

Single-finger Bluetooth ring scanner enables hands-free mobility, giving workers comfort.

- Advanced scanning technology and PRZM Intelligent Imaging
- Multiple trigger options: single trigger, double trigger or top trigger

### INDUSTRY MARKET:



## RS5000 1D/2D Coded Ring Scanner

Single-finger coded ring scanner enables hands-free scanning.

- Advanced scanning technology and PRZM Intelligent Imaging
- Capture barcodes from near contact to over 25 inches (63.5 cm)

### INDUSTRY MARKET:



## RS4000 Coded Ring Scanner

Powerful single-finger coded ring scanner enables hands-free scanning.

- Bright scan line to ensure precision aiming
- Scans virtually any 1D barcode in any condition

### INDUSTRY MARKET:



## HS3100/HS2100 Headsets

Rugged Bluetooth and corded HD voice headsets built for the most demanding industrial environments.

- Superior noise-cancellation technology
- HD voice for superior audio clarity and quality

### INDUSTRY MARKET:



From wearable mobile computers to ring scanners and headsets, Zebra's robust, wearable solutions give your workers the performance advantage they need.





## Rugged Enterprise Tablets

Price checks. Inventory lookup. Line busting. Patient engagement. Pre-trip checklist. Real-time route updates. GIS or CAD software. Proof of delivery. Every feature and form factor was added to help you succeed at your job, inside the four walls and outside in the harshest environments.



Use our tablet selector tool to find the right tablets for your industry, environment and workflows.



### ET60/ET65 Rugged Enterprise Tablets

#### The most versatile rugged business tablets

Maximize productivity and business efficiency with business tablets that deliver more features, more power, more security, more ruggedness and more versatility.

- Android OS, 10-inch screen, optional integrated scanner
- Use as a tablet, 2-in-1 or vehicle-mount mobile computer
- Rugged for the most demanding environments—including the freezer
- Fastest wireless connectivity (ET60: Wi-Fi 6E; ET65: Wi-Fi 6E and 5G)

#### INDUSTRY MARKET:



### ET80/ET85 Rugged 2-in-1 Windows Tablets

Dependable 12-inch tablets created for workers the world depends on.

- Rugged, yet thinner and lighter than major 2-in-1 competitors
- Two devices in one: standalone tablet and true laptop replacement
- Fastest wireless connectivity (ET80: Wi-Fi 6E; ET85: Wi-Fi 6E and 5G)

#### INDUSTRY MARKET:



For more information, visit [www.zebra.com](http://www.zebra.com) or contact a sales associate.



### ET40/ET45 Rugged Enterprise Tablets

Right-priced tablets that have it all right out of the box.

- Android OS, 8-inch or 10-inch screen, integrated scanner
- Fully rugged with consumer-style design
- Fast wireless connectivity (ET40: Wi-Fi 6; ET45: Wi-Fi 6 and 5G)

#### INDUSTRY MARKET:



### ET51/ET56 Rugged Enterprise Tablets

Surprisingly rugged, thin and lightweight for everyday business use.

- Windows or Android OS, 8-inch or 10-inch screen
- Fully rugged with consumer-style design
- Rugged frame increases durability

#### INDUSTRY MARKET:



### ET51 with Integrated Scanner

Compact enterprise tablet with built-in scanning.

- Windows or Android OS, 8-inch screen and built-in scanner
- Fully rugged design with hand strap on the side
- Option for payment device that charges in place

#### INDUSTRY MARKET:



### L10/L10ax Rugged Enterprise Tablets

Versatility meets ruggedness.

- Windows or Android OS, XSLate and XPad (integrated scanner) form factors
- Rugged specs that outperform in the harshest conditions
- L10ax Windows equipped with fastest wireless connectivity: Wi-Fi 6E and 5G

#### INDUSTRY MARKET:



## Healthcare Tablets



### ET40-HC/ET45-HC Rugged Healthcare Tablets

Built to meet the demands of healthcare and your budget.

- Android OS, 10-inch screen, integrated scanner
- Emergency alert programmable button
- Advanced medical-grade disinfectant-ready plastics with fully rugged consumer-style design
- Fast wireless connectivity (ET40-HC: Wi-Fi 6; ET45-HC: Wi-Fi 6 and 5G)

#### INDUSTRY MARKET:



## Vehicle-Mounted Computers



### VC8300 Vehicle-Mounted Computers

Android keyboard/touch vehicle mount computer designed for the most extreme environments.

- Flexible data entry with integrated full alphanumeric keyboard
- Supports ease of Android migration with Terminal Emulation
- Configure Zebra scanners with the VC8300 to accelerate staging

#### INDUSTRY MARKET:







## Computer Accessories and Supplies

Don't keep customers waiting. Turn your mobile computer into a do-it-all mobile solution that works faster. Whatever you need to simplify and speed up your day, we have. With enterprise-class accessories ranging from Workstation Connect cradles and hubs to RFID adapters and trigger handles, you can convert your mobile devices to workstations, POS stations, RFID readers or advanced-range scanners for warehouse use.



### Carrying Solutions

#### Carry the day

Get a firm grip on work with belt clips, holsters, hand mounts, or shoulder and hand straps that keep mobile devices handy. Choose from a wide range of sizes for maximum comfort. They're made to perform in your rugged environments.



### Power Supplies

#### Charge ahead

Ensure all-day power, every day. Keep going with 24/7 Extension Back PowerPacks, warm and hot swap internal batteries, charging cradles, and cables.



### Docks, Cradles and Mounts

#### When productivity is the destination

Mount a plan of action with our lineup of docking and mounting solutions to fit any application—from POS and desktop solutions like our Workstation Connect Cradle to forklifts and patrol vehicles. Select from a variety of Zebra and third-party office, industrial and vehicle solutions, adapters, plates, braces and brackets.



### PowerPrecision Batteries

#### Built for durability and performance

The last thing you want is to run out of power in the middle of work. PowerPrecision batteries give you nonstop performance, because they're made to meet rigorous standards. Add to that PowerPrecision Management, and you have insight into your batteries' health and status. So you can start your day fully charged.



### And Then Some

#### Expand choices; expand capabilities

With this much versatility, there are accessories for every application. Ask us about our styluses, antennas, headsets, speakers, mobile payment options, screen protectors and more.



### Zebra Intelligent Cabinet Portfolio\*

#### Enterprise mobile device storage and management

Optimize how your enterprise mobile devices are stored, accessed, tracked and managed to harness the most efficient use of devices and workers. Ensure your assets and workflows function in tandem at high performance and optimal security to accelerate your business.

- Consolidate and connect to maximize performance
- Protect devices with authorized-only security
- Completely automate workflows with Zebra Access Management System (ZAMS)
- Five sizes to accommodate between 20 and 100 devices
- RF-friendly design and materials—devices won't lose Wi-Fi or cellular connection in the cabinet



For more information, visit [www.zebra.com](http://www.zebra.com) or contact a sales associate.

## Mobile Computer Software Solutions

### Zebra Dimensioning™

Zebra Dimensioning Certified Mobile Parcel captures accurate parcel dimensions and calculates shipping charges on Zebra mobile computers with a press of a button. And Mobile Parcel is ideal when you need visibility into parcel dimensions to improve load planning and warehouse utilization.

#### INDUSTRY MARKET:



### Zebra Workstation Connect

Transform Zebra mobile computers and tablets into mobile-driven workstations and POS stations on demand. The same Zebra mobile device workers use to complete many tasks throughout the day can also power a fully featured workstation or POS, driving costs and energy usage down—and the value of Zebra mobile devices up.

#### INDUSTRY MARKET:



### Zebra Pay™

Zebra Pay is the industry's first integrated enterprise-class SPoC-based mobile payment solution, enabling enterprises to accept all major card brands, anywhere, on compatible Zebra mobile devices. This EMV L3-certified cloud-based solution supports tap-to-pay, chip and magstripe, complete with PIN entry on Zebra mobile computers and tablets.

#### INDUSTRY MARKET:



### Zebra Access Management System (ZAMS)

See the real-time status of your devices—how many are in service, charging or missing. ZAMS turns Zebra Intelligent Cabinets into powerful automated device administrators that can track which worker is using which device—and ensure devices are always stored securely and fully charged before being placed into service on a shift.

- Improve device utilization
- Increase worker accountability
- Increase worker productivity
- Practically eliminate time spent managing devices and device access



Scan the QR code to learn more.

\*Not available in all regions.





## Industrial Printers

Zebra industrial printers are designed for harsh and demanding environments. With rugged durability and future-proof adaptability, our user-friendly barcode label and RFID printers are designed to provide 24/7 reliability. Don't compromise—choose Zebra for your high- to mid-volume applications.



See how two major companies used industrial printers to make their operations up to five times faster.



### ZT600 Series

#### Intelligence and industrial brawn

Industrial strength and full featured for every challenge.

- All-metal construction supports continuous heavy-duty performance with high throughput
- Best-in-class registration tolerance for micro-label applications
- Available in 4- and 6-inch print widths\*

#### INDUSTRY MARKET:



### After implementing ZT200

Series industrial printers along with MC3300 rugged mobile computers, distribution center workers have made fewer fulfillment and reporting errors and become faster in all phases of the distribution process.”

— Eduardo Cortez,  
Distribution Center Manager, Multicenter

 For more information, visit [www.zebra.com](http://www.zebra.com) or contact a sales associate.

ZEBRA PORTFOLIO GUIDE | 2024



#### ZT111\*\*

Get just the right features you need.

- Compact footprint
- Ideal for light industrial and commercial environments

#### INDUSTRY MARKET:



#### ZT231

A feature-packed printer at a value-class price.

- 4.3-inch full-color touch display for ease of use and status at a glance
- UHF RFID printing and encoding for greater visibility and tracking

#### INDUSTRY MARKET:



#### ZT400 Series

Rugged durability, designed to grow with your evolving business needs.

- 4.3-inch full-color touch display for quick settings changes
- Tool-less printhead and platen roller replacement
- Available in 4- and 6-inch print widths

#### INDUSTRY MARKET:



#### ZT510

An ideal balance between performance and value with essential features for heavy-duty printing.

- All-metal construction supports continuous performance without throughput delays
- Icon-based, multilingual graphical LCD user interface is intuitive to operate

#### INDUSTRY MARKET:



## Print Engines



#### ZE500 Series

OEM print engine for print-and-apply labeling applications.

- Intuitive, full-color, 4.3-inch touch display that can be rotated
- High print speeds to keep up with fast-paced operating lines
- Available in 4- and 6-inch print widths

#### INDUSTRY MARKET:



**Zebra Print DNA** lets you easily configure, manage and maintain your printer fleet.





## Desktop Printers

Zebra desktop printers are compact and simple to operate, and they offer the durability your business demands for low- to mid-volume printing. Don't sacrifice performance for savings; Zebra has a desktop printer at every price point, available in direct thermal or thermal transfer models, for all your barcode label, receipt, wristband and RFID applications.



Learn how taking the time to find the right label printer will save your front-line workers time and effort, increasing worker availability for revenue-generating tasks and customer service.



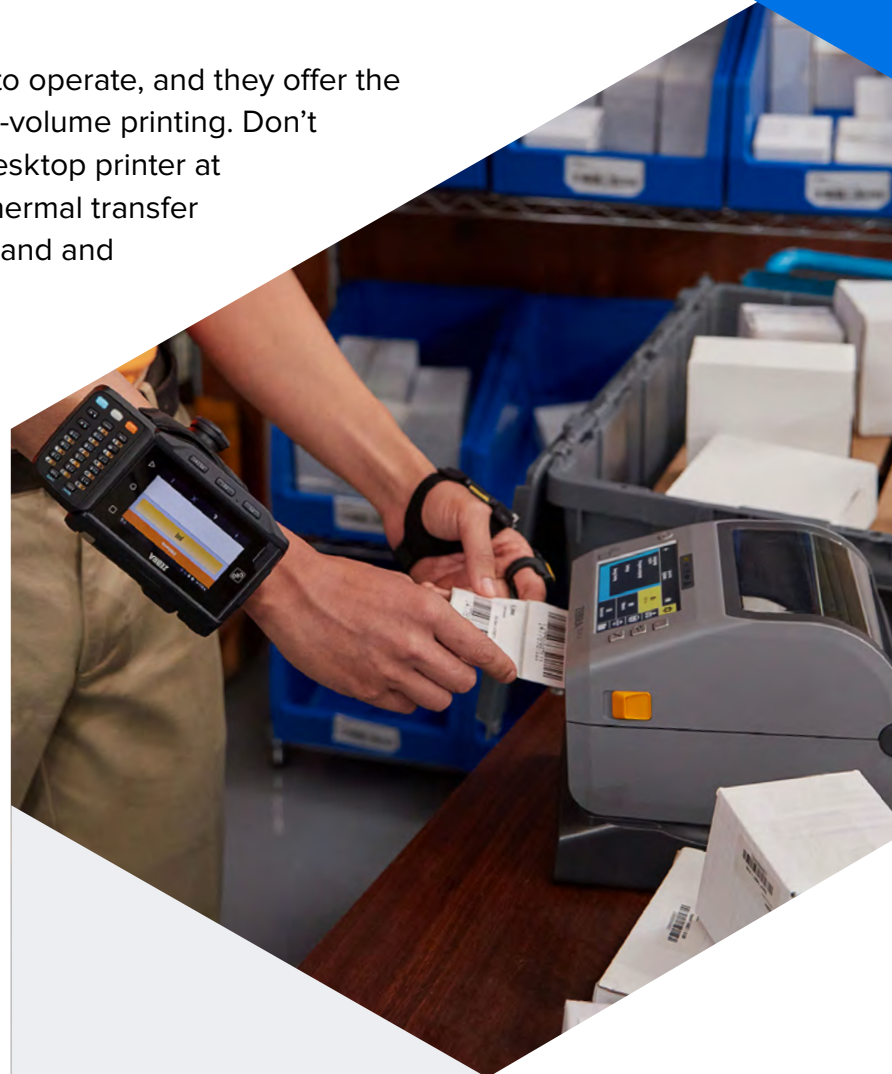
### ZD621

#### Premium features and maximum performance

Invest in the best for years of quality and secure printing.

- 4-inch print width, 8 ips max print speed
- 203 and 300 dpi available
- Intuitive color touch display (standard on healthcare and RFID models)
- Healthcare, RFID and linerless models available

#### INDUSTRY MARKET:



**Your ability** to print accurate, quality labels in a timely manner affects your ability to successfully track and manage all your workflows.



For more information, visit [www.zebra.com](http://www.zebra.com) or contact a sales associate.

ZEBRA PORTFOLIO GUIDE | 2024



### ZD200 Series\*

Simple operation, basic feature set, exceptional value.

- Quality dual-wall construction
- 4-inch print width, compact design, easy media loading

#### INDUSTRY MARKET:



### ZD411

Advanced, "fits anywhere" 2-inch printer, easy to use with an intuitive interface.

- Multiple configurations (peeler, cutter, Ethernet, battery)
- Variety of connectivity options

#### INDUSTRY MARKET:



### ZD421

Elevated features, flexibility, reliability and security.

- 4-inch print width, 6 ips max print speed, large ribbon capacity
- Multiple options (peeler, cutter, Ethernet, battery), ribbon cartridge model available

#### INDUSTRY MARKET:



### ZD611

Premium features in a 2-inch desktop printer.

- 8 ips max print speed
- 203 and 300 dpi available
- RFID and linerless models available

#### INDUSTRY MARKET:



\* Available as ZD888 in China.



## Mobile Printers

Zebra mobile printers increase employee productivity and accuracy by enabling portable printing of barcode labels, receipts and RFID tags at the point of application. We offer a handheld mobile printer at every price point for every industry, and accessories for a complete portable solution.



See how to use mobile printers for a “lean labeling” solution that can improve productivity for your business.



### ZQ600 Plus Series

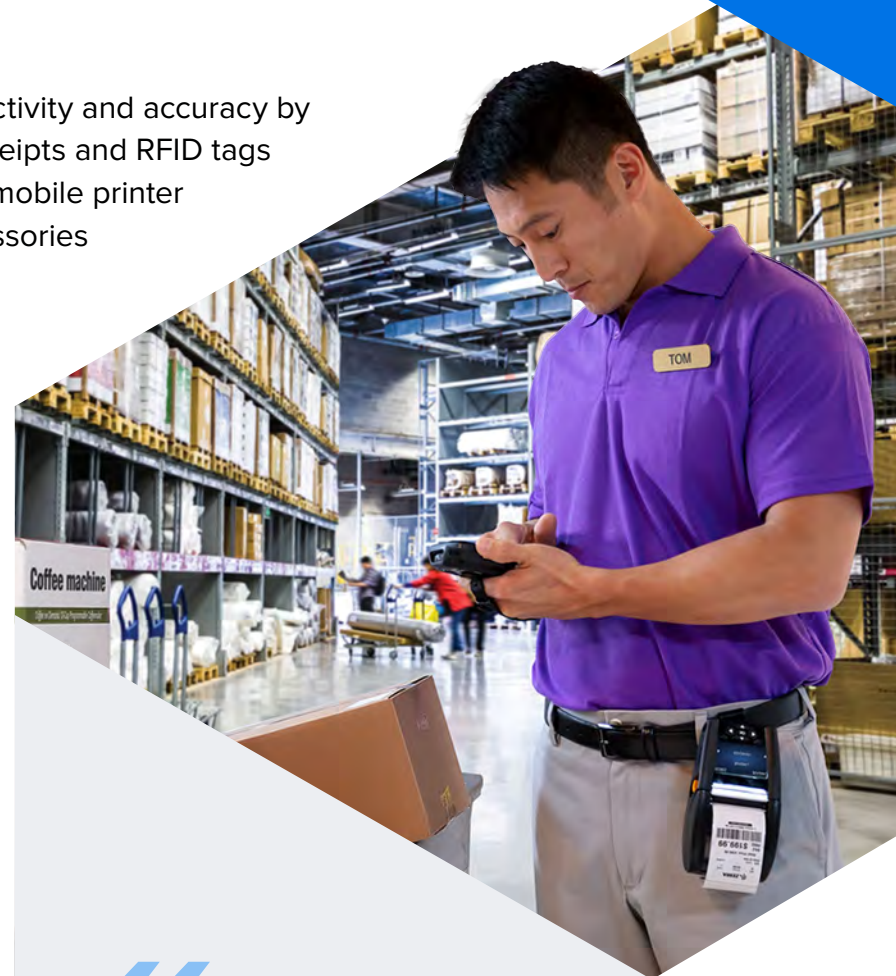
#### ZQ600 Plus Healthcare Series

**Zebra’s most versatile mobile printer series**

The latest wireless connections for fast, reliable and secure printing.

- Large color display for easy configuration and operation
- Comprehensive remote management tools
- Superior battery power and power management with PowerPrecision and Power Smart Print Technology
- Linerless version available
- 2-, 3- and 4-inch print width

#### INDUSTRY MARKET:



**Material handlers** can combine fixed vehicle computers with mobile printers to help improve labeling compliance, item track and trace, and more extensive inventory management efforts, such as cycle counts.

– Zebra Edge Blog Team



### ZQ200 Series\*

Zebra’s smallest and most affordable mobile printer.

- Compact and lightweight, yet durable and reliable
- Linerless version available\*\*
- 2- and 3-inch print width
- Receipt and label printing in multiple media widths when used with media spacers

#### INDUSTRY MARKET:



### ZQ500 Series

The industry’s most rugged mobile printer.

- High-duty-cycle receipt and medium-duty-cycle label printing on-the-go
- Fast print speed with up to 5 ips
- 2-year standard warranty (ZQ511/ZQ521)
- Linerless version available
- 3- and 4-inch print width

#### INDUSTRY MARKET:



### ZQ300 Plus Series\*\*\*

Two lightweight yet durable designs to meet your business needs.

- Mid-range 2- or 3-inch printers for moderate receipt, label and linerless printing
- Multiple charging options available, including convenient USB charging
- Linerless version available

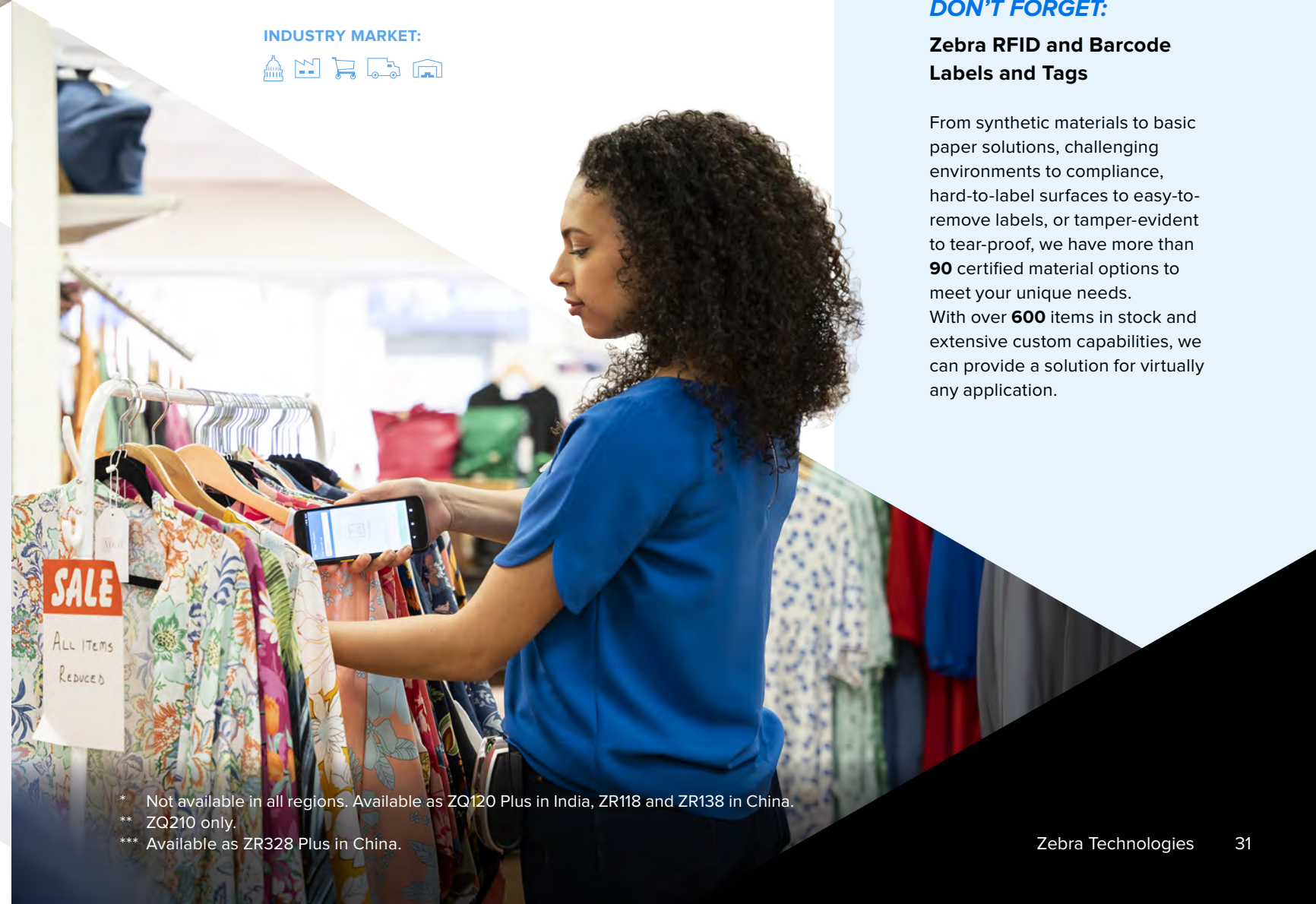
#### INDUSTRY MARKET:



## DON'T FORGET:

### Zebra RFID and Barcode Labels and Tags

From synthetic materials to basic paper solutions, challenging environments to compliance, hard-to-label surfaces to easy-to-remove labels, or tamper-evident to tear-proof, we have more than **90** certified material options to meet your unique needs. With over **600** items in stock and extensive custom capabilities, we can provide a solution for virtually any application.



\* Not available in all regions. Available as ZQ120 Plus in India, ZR118 and ZR138 in China.

\*\* ZQ210 only.

\*\*\* Available as ZR328 Plus in China.



## Card Printers

Zebra card and badge printers make it easy to connect, create and print high-quality, durable cards for a variety of applications. Whether you're printing ID cards, hospitality badges or financial cards, Zebra printers offer the security, supplies and software you need for a full solution.



Read the story of how our award-winning ZC printers were designed, including the engineering priorities that really changed the game.



### ZXP Series 7

**Highest operational efficiency with great output**

Fast and effortless card printing.

- Process up to three jobs simultaneously
- Single- or dual-sided printing
- Waste-free, single- or dual-sided lamination

#### INDUSTRY MARKET:



**Zebra card printers** are designed to simplify all end-user touch points in order to create an intuitive, worry-free experience."

— Curt Croley, Senior Director, Innovation and Design, Zebra Technologies

 For more information, visit [www.zebra.com](https://www.zebra.com) or contact a sales associate.

ZEBRA PORTFOLIO GUIDE | 2024



### ZC10L

Edge-to-edge personalization, rugged design.

- Single-sided dye sublimation printer
- Prints large, oversized cards and badges

#### INDUSTRY MARKET:



### ZC300 Series\*

Easy setup with painless plug-and-play deployment.

- Single- or dual-sided printing
- Multiple encoding and connectivity options

#### INDUSTRY MARKET:



### ZC100\*

Compact size facilitates front-office deployments.

- Affordable and easy to use
- Direct to card single-sided printing

#### INDUSTRY MARKET:



### CardStudio 2.0 and Digital ID

Easy-to-use card design and issuance software.

- Create any card design, from simple to sophisticated, single- or double-sided, color or monochrome
- Securely issue and update Digital IDs to complement printed cards

#### INDUSTRY MARKET:



### ZXP Series 9

Ensure security with built-in fraud protection.

- Stunning photo-like cards and edge-to-edge printing
- Data encryption, host authentication and custom holographic laminates

#### INDUSTRY MARKET:



**We wanted** to ensure that anybody could learn how to use these Zebra printers with complete confidence within a matter of minutes."

— Jaeho Choi  
Director of Industrial Design, Zebra Technologies





## RFID Printers/Encoders

Your solution depends on reliable data. Zebra offers the industry's widest range of printers that accurately encode RAIN RFID labels, tags and cards where and when you need them. Build your solution on RFID data you can trust.



Learn the fundamentals of how to take advantage of RFID to comply with a growing number of industries' RFID track-and-trace requirements.



### ZE500 Series RFID Print Engines

#### Mission-critical doesn't compromise

Zebra's enhanced RFID-ready OEM print engines are ideal for high-volume industrial applications for manufacturing, shipping, receiving and more.

- High print speeds to keep up with fast-paced operating lines
- Adaptive Encoding Technology simplifies RFID setup



#### INDUSTRY MARKET:



**RFID tagging** is growing in popularity across many sectors as organizations seek ways to better track and trace inventory and assets.

 For more information, visit [www.zebra.com](http://www.zebra.com) or contact a sales associate.

ZEBRA PORTFOLIO GUIDE | 2024



### ZT600 Series, ZT400 Series, ZT231 RFID Industrial Printers

These printers keep your operations running 24/7 in the harshest environments and the most demanding RFID applications.

#### INDUSTRY MARKET:



### ZQ630 Plus, ZQ511 and ZQ521 RFID Mobile Printers

Our premium mobile printers can print at the point of application, making them a convenient and efficient solution. They are friendly to workers and easy for IT to integrate and manage.

#### INDUSTRY MARKET:



### ZD611 and ZD621 RFID Desktop Printers

Premium features, maximum performance and unmatched security in an easy-to-use compact printer.

#### INDUSTRY MARKET:



### ZXP Series 7 and ZC300 Series Card Printers

Whether you need high performance or a compact size with groundbreaking simplicity, Zebra UHF RFID card printers deliver.

#### INDUSTRY MARKET:



**Giving workers** a way to print an RFID tag and immediately affix it to an asset helps to mitigate the risk of mis-tagging."

– Keith LeFebvre,  
Vice President of SPG Product & Solutions Management,  
Zebra Technologies





## Printer Supplies

Zebra certified supplies provide consistently outstanding quality, performance and service so you never have to worry about thermal printing supply issues interrupting your operations.

### Zebra Barcode Labels and Tags

From synthetic materials to basic paper solutions, challenging environments to compliance, hard-to-label surfaces to easy-to-remove labels, or tamper-evident to tear-proof, we offer a comprehensive list of certified materials to meet your unique needs. With a large number of in-stock items and extensive custom capabilities, we can provide a solution for virtually any application.

### RFID Labels and Tags

Choose from our large selection of in-stock RFID labels, tags and wristbands, or we can create a custom solution including inlays and chips from leading brands integrated into one of our pre-tested thermal materials in any size and configuration, as well as our print and encode services.

### Receipt Paper

Our portfolio of receipt paper options meets your brand image and application durability, image quality and archival requirements, as well as your budget.

### Hospital Bracelet and Patient ID Wristbands

Zebra offers thermal, laser, RFID and alert wristbands that remain scannable throughout the average patient stay. We can meet the particular needs of your patients and workflows—from general patient population to labor and delivery, neo-natal, and outpatient service.

### Event Wristbands

Our broad portfolio of print-on-demand thermal barcode and RFID wristbands enables implementation of cashless POS, entry management, reduction in ticket fraud, simplified transactions, and tracking guests' last best-known location.

### Thermal Ribbons

Choose from wax, wax/resin and resin formulations to meet the durability demands of your application when ideally matched to our thermal transfer materials.



See how simply improving your label selection can speed up processes, increase your throughput, correctly route your goods and improve your bottom line.



For more information, visit [www.zebra.com](http://www.zebra.com) or contact a sales associate.

ZEBRA PORTFOLIO GUIDE | 2024

## Environmental Sensors

Our innovative, cost-effective environmental sensing solutions reimagine supply chain visibility. Visual and electronic sensors enable you to easily monitor temperature, humidity, moisture and more so you can be confident your products have remained within their environmental range to minimize waste, optimize efficiency and reduce costs.



See how our cost-effective visual and electronic environmental sensors help to prevent product spoilage.

### Electronic Sensors

ZS300 Electronic Temperature Sensors Solution wirelessly monitors environmentally sensitive products so you can analyze excursions and act upon them in real time.

- High-performance Bluetooth connectivity automates data collection
- Easily and securely integrates into existing systems of record

### Ready-to-Use Indicators

TransTracker®, LIMITmarker®, FREEZEmarker® and Safe-T-Vue® help you gain visibility into the temperature exposure of vaccines, pharmaceuticals, medical devices, food and more.

- Card or self-adhesive easy-to-read visual indicators
- Reveal products exposed to heat or freeze events

### Printable Indicators

ZeOn-demand printable indicators combine a thermal printable label and environmental insights into a single solution to add an extra layer of critical information.

- Combines asset identification and environmental insight in a single solution
- Add clear asset information and visual cues to help minimize errors

## Print Confident. Print Quality. **Print Zebra.**

**Rigorously tested:** Our 23-point inspection keeps work and printers from coming to a standstill.

**Non-abrasive:** Sandpaper-like label surfaces cause printhead elements to fail prematurely, resulting in unreadable labels.

**Consistent quality:** The use of consistent materials ensures reliable performance from order to order, preventing downtime and the need to adjust printer settings.

**Made tough:** You work in hot, cold, damp and dusty environments. So do our supplies.

**Zebra printer compatibility:** Compatible inks, varnishes and tools ensure printers and workflows don't break down.

**Environmentally sustainable:** We are dedicated to providing a range of pre-tested, high-quality, environmentally friendly supplies to help you meet your sustainability goals.

**Stringent standards:** Our supplies are designed to meet industry standards, so you can meet compliance goals.

**RFID Printing and Encoding Service:** Get as few as 1,000 serialized preprinted and encoded RFID labels to your specifications to support pilots and compliance needs without having to invest in an RFID printing solution.





In healthcare, there’s no room for error. Zebra’s healthcare technology solutions help you to streamline care delivery with enhanced workflows and reduced workarounds so you can quickly locate staff and critical equipment and ensure patient safety and reduce errors.

## Mobile Computers and Tablets

Equip your nurses, clinicians and non-clinical healthcare workers with devices specifically designed for busy healthcare facilities. Made to be durable to hold up to rigorous, frequent cleaning and disinfection.



### TC21-HC/TC26-HC Mobile Computers

The ultimate healthcare feature set for the ultimate in quality of care

These small, easy-to-carry devices are big on features, offering the very latest in advanced mobile technologies designed from the ground up for healthcare.

- Dedicated emergency alert button
- User-replaceable battery
- Barcode scanning
- Mobile-driven workstation with Workstation Connect



### Zebra mobile computing

provides workers in your healthcare environment with top high-performance devices.



Zebra mobile computers help the Paracelsus Group achieve a dynamic, digital healthcare operation.



#### TC52X-HC Series Mobile Computers

With a large, 5-inch Full HD display, optimized voice capabilities and a disinfectant-ready design, the TC52x-HC and TC52ax-HC are made to deliver a performance edge and better patient care for clinicians.

- Dedicated emergency alert button
- True hot-swappable, removable battery
- Healthcare-friendly white illumination LEDs with green aimer
- Wi-Fi 6 and double the memory (TC52ax-HC only)



#### HC20 Healthcare Mobile Computer

Perfectly designed for today's healthcare workers.

- Advanced 6-inch FHD+ edge-to-edge display
- Fast wireless connectivity (Wi-Fi 6)
- Dedicated emergency alert button



#### HC50 Healthcare Mobile Computer

Perfectly designed with premium features for today's healthcare workers.

- Advanced 6-inch FHD+ edge-to-edge display
- Fast wireless connectivity (Wi-Fi 6E)
- True Hot Swap battery
- Dedicated emergency alert button



#### ET40-HC/ET45-HC Rugged Healthcare Tablets

Built to meet the demands of healthcare and your budget.

- Android OS, 10-inch screen, integrated scanner
- Emergency alert programmable button
- Advanced medical-grade disinfectant-ready plastics with fully rugged consumer-style design
- Fast wireless connectivity (ET40-HC: Wi-Fi 6; ET45-HC: Wi-Fi 6 and 5G)



### We're delighted

with the success of this project. It's improving care for our patients and helping our teams work more efficiently."

– Anjali Sherlin Menezes,  
Acting Head of Purchasing  
Division, Paracelsus Group



## Scanners

Zebra scanners simplify caregivers' interactions with their patients. Scanning applications, though routine in nature to the caregivers, help prevent medical errors, improve patient safety and increase productivity. With imaging technology automating many administrative requirements, caregivers can focus on the needs of the patient.



All of our healthcare scanners can be disinfected to medical-grade standards and here's how.



### DS9900 Series Hybrid Handheld/ Hands-Free 1D/2D Scanner for Labs

Built for life in the lab

Improve workflow efficiency and accuracy with a hybrid presentation imager built for the lab.

- Hybrid design offers handheld and hands-free flexibility
- Elevated electronics protect the device from casual spills
- Disinfectant-ready housing can handle regular sanitizing



### Zebra healthcare scanners

give clinicians the tools they need to improve patient outcomes, increase productivity and streamline everyday processes.



#### DS8100 Series for Healthcare 1D/2D Scanner\*

Seamlessly integrate into existing workflows.

- Corded and cordless models
- Disinfectant-ready housing can handle regular sanitizing



#### DS2200 Series for Healthcare 1D/2D Scanner\*

Dependable, affordable and purpose-built for healthcare.

- Corded and cordless models
- Disinfectant-ready housing can handle regular sanitizing



#### CS60-HC Companion 1D/2D Scanner

Easily converts between corded and cordless, hands-free and handheld operation.

- One device can be used for multiple workflows
- Disinfectant-ready housing can handle regular sanitizing



#### DS4600 Series for Healthcare 1D/2D Scanner

A versatile healthcare scanner that does more for the whole hospital.

- Corded model
- Disinfectant-ready housing can handle regular sanitizing



\* Not available in all regions.



## Printers

Efficiently manage workflows and minimize mistakes with thermal printers that help strengthen patient care from admission to discharge. Zebra healthcare printers are purpose-built with medical-grade, disinfectant-ready materials that can be safely cleaned between each use.



Elevate patient care at every step with versatile Zebra healthcare printers.



### ZQ610 Plus-HC

**Zebra's most versatile mobile healthcare printer**

Reduce the risk of errors in specimen collection with premium mobile printing at the point of care.

- Comprehensive remote management tools
- Superior battery power and power management
- Latest wireless connections for fast, reliable and secure printing



**Zebra printers,** labels and wristbands help healthcare providers label patient samples, track medical supplies, optimize patient identification and manage inventory.



### ZD411-HC

The “fits anywhere” printer.

- Multiple options (peeler, cutter, Ethernet, battery)
- Advanced yet easy to use with an intuitive interface



### ZD421-HC

Advanced features and ease of use.

- Mid-range desktop printer with flexibility, reliability and security
- 4-inch print width, 6 ips max print speed, large ribbon capacity



### ZD510-HC

Wristbands printed by a specialist.

- Easy media loading cartridge for fast-paced environments
- Ultra-compact, quiet operation



### ZD611 RFID

Compact without compromise.

- UHF RFID printer/encoder in 2-inch desktop printer
- Field-upgradeable media handling and connectivity



### ZD621-HC

Premium features and maximum performance.

- 4-inch print width, 8 ips max print speed
- Compact design, intuitive interface, large capacity ribbon



### ZQ620 Plus-HC

Latest wireless connections for fast, reliable and secure printing.

- Improve specimen labeling and accuracy
- Large color display for easy configuration and operation

**Zebra certified supplies** are designed specifically for Zebra healthcare printers and tested for durability in healthcare environments.







## LOCATION AND TRACKING

### Handheld RFID Readers and RFID-Enabled Devices

Track, trace and inventory assets in real time. Choose from sleek handhelds, hands-free devices, rugged form factors and RFID sleds. Here are just a few ways to handle RFID easily and accurately.



Watch this video about how an Argentinian medical center uses Zebra's RFID technology to improve staff and patient safety by implementing traceability in the laundry process and asset control.



#### RFD90 Ultra-Rugged UHF RFID Sled Relentless. Versatile. Future-proof.

Deliver higher volumes at greater speeds with these ultra-rugged sleds built for the most demanding environments, featuring industry-best read rates and read ranges. Connect directly or wirelessly to Zebra mobile computers and third-party smartphones. Integrated Wi-Fi 6 capability allows easy over-the-air device management.

##### INDUSTRY MARKET:



#### Did you know?

Zebra MotionWorks sensors throughout every NFL stadium track RFID tags placed in players' shoulder pads, charting individual movements within inches.



For more information, visit [www.zebra.com](http://www.zebra.com) or contact a sales associate.

ZEBRA PORTFOLIO GUIDE | 2024



#### RFD40 RFID Standard Sled

Work more efficiently. Optimize cycle-counting with industry-best read rates, read range and increased battery capacity. Most importantly, it connects to current and future Zebra mobile computers, so you get a future-proof device.

##### INDUSTRY MARKET:



#### RFD40 RFID Premium and Premium Plus Sleds

The RFD40 UHF RFID Premium and Premium Plus Sleds build on the same great features of the standard model and offer better support for third-party smartphones by providing a 1D/2D barcode imager,\* Bluetooth and NFC. Integrated Wi-Fi allows for over-the-air device management.

##### INDUSTRY MARKET:



#### MC3330xR Series UHF RFID Readers

Bring a new level of comfort, speed, ease of use and accuracy to your RFID applications. Superior RFID read performance and receiver sensitivity enable fast and accurate capture of even the most challenging RFID tags. Built for maximum uptime with a large touchscreen and physical keypad, yet lightweight with the right ergonomics for all-day comfort.

##### INDUSTRY MARKET:



#### DS9908R RFID Scanner

Close the supply chain loop. Read RFID-tagged merchandise at the point of sale for up-to-the-minute inventory tracking, or RFID tags on laboratory assets and specimen samples for improved laboratory management. The DS9908R is a hybrid handheld/hands-free scanner that offers best-of-breed barcode scanning with RFID reading capabilities in a single platform.

##### INDUSTRY MARKET:



Learn how a national office furniture and components manufacturer, gained real-time visibility through every stage of its supply chain process with a fully integrated RFID solution to help resolve its operational challenges.



#### WS50 RFID Android Wearable Computer

Give your disconnected task workers more tools to complete more types of tasks, boosting collaboration, productivity and workflow efficiency. Worn on the wrist, back of hand or two fingers, this powerful ergonomic device provides an integrated host-free UHF RFID reader, an optional external antenna, a barcode scanner that can capture virtually any barcode in any condition, two-way radio instant push-to-talk capabilities, and more.

##### INDUSTRY MARKET:







## LOCATION AND TRACKING

### Integrated RFID Portals\*

Manage and monitor inventory, control costs, and optimize workflows with fast, reliable, highly automated updates when tagged assets pass through a portal or chokepoint. Specialized antennas reduce erroneous reads and sustain a highly accurate read rate.



Zebra integrated RFID portals offer unmatched accuracy and interoperability.



**Zebra's integrated** RFID portals were designed with front-line users, workplaces and workflows in mind, engineered for ease of use, reliability and ruggedness.

### Transition RFID Portal\*

#### Reduce manual scanning

Used primarily at dock doors, these integrated portals can reduce the need for human intervention and manual scanning at common chokepoints.

#### INDUSTRY MARKET:



For more information, visit [www.zebra.com](http://www.zebra.com) or contact a sales associate.

ZEBRA PORTFOLIO GUIDE | 2024



### Wall-Mount RFID Portal\*

#### Fits right in

These fully enclosed, plug-and-play units mount easily beside doorways and hallways near storage rooms, offices and warehouses to provide versatile RFID tracking for multiple applications.

#### INDUSTRY MARKET:



### Fixed RFID Tunnel\*

#### Improved conveyor throughput

Built especially for inline conveyor operations, these units automatically read tagged assets as they move along the line and through the tunnel, improving workflow accuracy.

#### INDUSTRY MARKET:



### Integrated RFID Table\*

#### Tabletop accuracy

RFID antennas mounted underneath the table are specially configured to read items placed on the surface in any orientation.

#### INDUSTRY MARKET:



### Mobile RFID Pallet\*

#### Elevated reading

Ideal for areas with elevated racking and high tag volumes, these pallet-mounted RFID readers are designed to travel through storage aisles by forklift, collecting accurate information quickly and safely.

#### INDUSTRY MARKET:



Zebra MotionWorks Enterprise RFID Reader Management lets you deploy, configure and monitor a diverse fleet of Zebra fixed RFID readers from one consolidated application, regardless of location.



**Our new** integrated RFID portals will provide organizations with the confidence to know where their assets are any point in time and help increase the accuracy and speed of receiving, put away, consume and resell."

— Matt Seltz  
Vice President of ALT Customer Success, Zebra Technologies





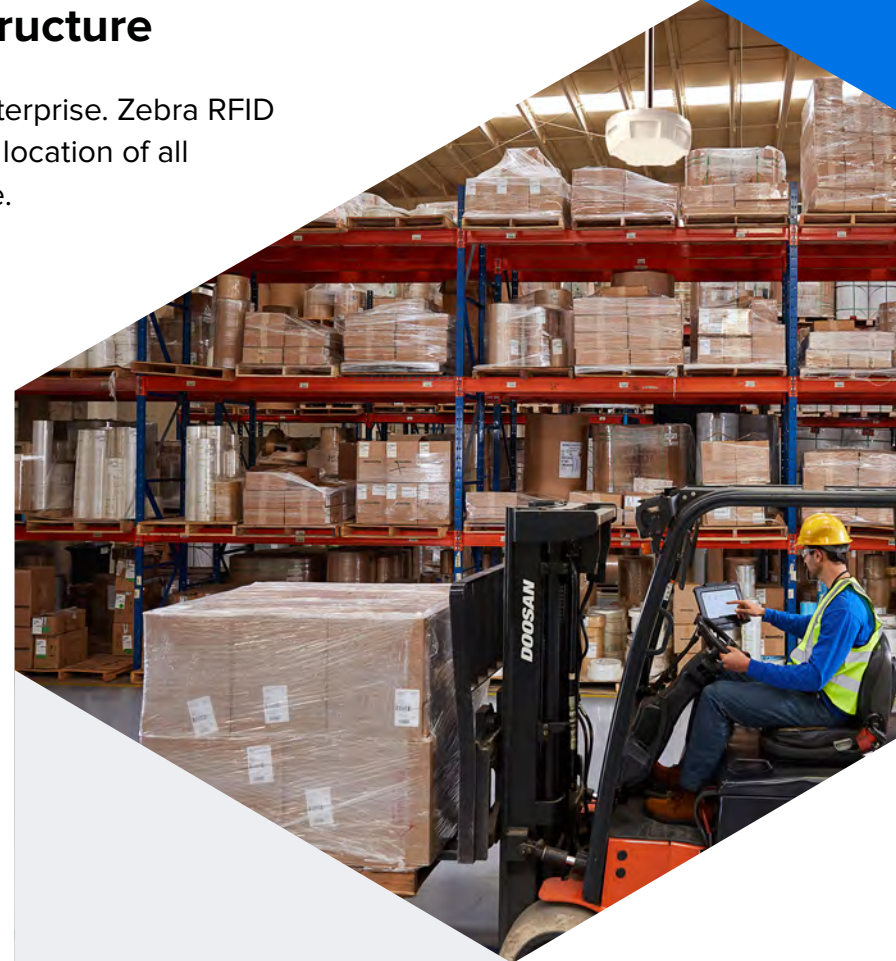


## Fixed RFID Readers and Infrastructure

Achieve maximum asset visibility across your enterprise. Zebra RFID Array Readers provide visibility into the pinpoint location of all your tagged assets, including those on the move.



See how automotive manufacturers can gain operational oversight by using overhead RFID systems to better control their production processes.



### ATR7000 RTLS Reader

**Redefine operational efficiency with superior, affordable real-time locationing using passive RFID.**

See where your inventory, forklifts, equipment, workers and more are located. Know when they're on the move and the direction they're moving. Identify, locate and track items in real time—and receive real-time alerts to improve compliance and loss prevention.

- Proprietary RFID technology
- Wide-angle multi-polarized antenna
- Beam steering for pinpoint accuracy
- Industry-best real-time tracking

#### INDUSTRY MARKET:



**RFID does not require** line-of-sight or a light source for tags to be read, a dramatic advantage over previous technologies, such as barcodes. A reader can discover what's in a box's entire contents without opening it, or pinpoint a specific item in an area containing hundreds of diverse components.



### FX9600 Fixed RFID Reader

Top-of-the-line performance for high-volume and rugged environments.

#### INDUSTRY MARKET:



### FX7500 Fixed RFID Reader

The small enterprise reader, big on speed and accuracy.

#### INDUSTRY MARKET:



### ST5500 Transition RFID Reader\*

Know what's entering and exiting your facility.

#### INDUSTRY MARKET:







# Antennas

Quickly and accurately track inventory and assets. Our robust antennas offer the high performance and range needed for high traffic and precision.



Read how a manufacturer saved thousands per year with a Zebra RFID system—including antennas that helped them read bins in any orientation, up to 20 feet away.



## AN440 RFID Antenna

### Large area coverage in any environment

Get the capacity and range you demand for reliable RFID tag reading. A good-looking, rugged, general-purpose area antenna, the AN440 is designed to perform exceptionally in all environments, indoors and out.

#### INDUSTRY MARKET:



**We're rolling** out the RFID system, including Zebra readers and antennas, to all of our facilities in order to improve warehouse and inventory control. When it's all in place, we'll see thousands of dollars in annual savings, and we expect to achieve ROI on the RFID system in less than two years."

— John Underwood,  
Engineering Manager, Southeastern Container



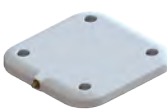
For more information, visit [www.zebra.com](http://www.zebra.com) or contact a sales associate.



## AN510 Ultra-Rugged RFID Antenna

Ultra-rugged and low profile for use indoors and outdoors.

#### INDUSTRY MARKET:



## AN520 Ultra-Rugged RFID Antenna

Small form factor and high performance.

#### INDUSTRY MARKET:



## AN610 Slimline RFID Antenna

Sleek. Discreet. Rugged.

#### INDUSTRY MARKET:



## AN620 Slimline RFID Antenna

Slimline, ultra-low profile.

#### INDUSTRY MARKET:



## AN650 Ground RFID Antenna

Rugged and ultra-low profile.

#### INDUSTRY MARKET:



## AN720 RFID Antenna

Compact indoor/outdoor antenna for customer-facing environments.

#### INDUSTRY MARKET:



## SN5604 RFID Reader and Antenna\*

Track inventory and mobile devices.

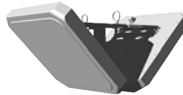
#### INDUSTRY MARKET:



## SP5504 Point of Sale RFID Antenna\*

Track inventory in your POS lanes or will-call areas.

#### INDUSTRY MARKET:



## SR5502 Transition Point RFID Antenna\*

Track inventory in the backroom from arrival to departure.

#### INDUSTRY MARKET:



## AN480 RFID Antenna

Global flexibility for all enterprises.

#### INDUSTRY MARKET:



\*Not available in all regions.







## Reader Software

You don't have to be an expert to set up and optimize Zebra RFID readers. Our tools help you every step of the way—easily configure and deploy your RFID readers without complications or delays.



Learn how Zebra software makes it easy to deploy and manage fixed RFID readers and other real-time location systems.

### MotionWorks Enterprise RFID Reader Management

**The easiest way to deploy, manage and scale passive RFID**

Deploy, configure, manage and monitor every cloud-ready Zebra passive RFID reader in your enterprise from a single, consolidated application.



### 123RFID Desktop

**Make RFID deployments as easy as 1-2-3**

Our free, intuitive wizard presents easy-to-understand options in drop-down menus, radio buttons and sliders. Use built-in help and how-to-videos to find answers to your questions.



### 123RFID Mobile

**Get RFID deployment mobility**

Leverage 123RFID mobility for more flexible deployment and easier access to our free, intuitive wizard.



### Network Connect

**Seamless, secure connections to programmable logic controllers (PLCs)**

Connect Zebra FX9600 Fixed RFID Readers to the most widely used Industrial Ethernet protocols and other standard networks without additional conversion hardware.



### Software Development Kits (SDK)

**Lower IT burden, easier RFID implementation**

Zebra RFID SDKs provide a powerful set of APIs to take full advantage of handheld reader performance, functionality and versatility and offer support for Android, iOS, Windows and Xamarin.



### RFID technology

has reached a tipping point. While barcodes are incredibly useful and as cost-effective as it's possible to be, RFID can be more versatile and efficient in taking automation to the next level. And affordable RFID tags are quickly becoming commonplace at every step of the supply chain."

— John Hughes,  
Director of Software  
Product Management,  
Zebra Technologies





## Location Technologies

Zebra offers a full portfolio of best-in-class hardware options for capturing location data, to satisfy a large variety of requirements for range, accuracy and precision. Combined with the power of Zebra MotionWorks Enterprise platform, which translates this location data into meaningful insights, Zebra delivers the location expertise you need to maximize the benefits of real-time tracking in your organization.



Read this case study about how Zebra Technologies enabled Bimbo Bakeries USA to revolutionize their supply chain.

### Ultra-Wideband Solutions

Zebra delivers real-time visibility with Ultra-Wideband (UWB) solutions—a real-time location system (RTLS) that allows for a myriad of asset management applications. Accurately track personnel and equipment indoors and out. The UWB system provides the lowest cost-of-ownership in the industry by improving installation ease, visibility, scalability, performance, asset tracking and tag management.



### WhereNet

The WhereNet RTLS provides the longest-range RTLS capabilities and performance in all environments, including complex and hazardous ones. WhereNet’s long tag-to-sensor range allows you to have real-time visibility and status information on your assets with a cost-effective RTLS network infrastructure.

### Bluetooth Low Energy Devices

Our Bluetooth beacons and bridges are quickly and easily deployed, available in multiple form factors and price points, and can be used for asset tracking and other location solutions.



## Hyperconnected

distribution centers are the new reality. Zebra’s recent vision study found that **43%** of organizations plan to implement real-time location systems (RTLS), enabled in part by RFID tagging and Bluetooth technology like beacons. These systems give distribution center managers a bird’s-eye view of operations, allowing for real-time cross-checking of an asset’s location.





## Zebra MotionWorks

When you can track everything—and put insights derived from real-time data immediately to work—you can accomplish anything. Automating visibility to your critical assets allows you to ramp up productivity, boost efficiency and grow your business—by delineating data that arms your enterprise with actionable insights.



Read this case study about a partnership between Zebra and Toyota Material Handling, using MotionWorks Enterprise to maximize efficiency.

### Zebra MotionWorks Enterprise™

Turn the location of enterprise assets into actionable business insights

Zebra MotionWorks Enterprise is a comprehensive software suite designed to help IT and operations managers deploy, configure and manage a population of sensors and readers, gather data from them, and obtain meaningful information from that data.



### Zebra MotionWorks Sport™\*

Seeing all facets of this field and yours

Use real-time performance statistics to scout for players and create winning strategies.

- Optimize athlete performance by helping trainers keep athletes at peak performance
- Strengthen coaching and training with a consistent, data-forward analysis method
- Engage fans by broadcasting player statistics on television, mobile engagement and in stadiums



### Zebra MotionWorks Signature Services\*

Accelerate the deployment of your MotionWorks location solution. Ensure proper design, architecture and integration with legacy IT systems and user adoption.



## By automating

root-cause analysis of workflow disruptions, MotionWorks Enterprise empowers Toyota Material Handling's staff to focus on more high-level responsibilities. The company's long-term vision includes expanding its use of MotionWorks Enterprise for production, parts delivery and distribution to optimize the tracking and tracing of its entire value stream.





## Fixed Industrial Scanners

Zebra's fixed industrial scanners automatically track and trace items from production to distribution. Easily keep track of every part and package with a model for every application. Upgradeable features grow as you do to meet the evolving needs of your business.



Watch this video on how machine vision technology can help drive production performance.



### GS20 Connectivity Gateway

**Increase production line throughput with next-gen scan tunnel architecture**

This powerful industrial connectivity gateway enables scan tunnel configurations to substantially increase package tracking and sorting throughput.

- Connect to up to 16 cameras to support a variety of package sizes and label orientations
- Built-in support for Rockwell, Siemens, Mitsubishi and Omron programmable logic controller (PLC) devices



**Now more than ever,** you need to improve operational efficiency, accuracy and agility in your supply chain to keep up with changing global conditions as well as increased pressure from an on-demand economy. Implementing industrial automation solutions can help achieve these goals and improve supply chain workflows.”

— **Donato Montanari,**  
Vice President and General Manager of Machine Vision and Fixed Industrial Scanning, Zebra Technologies

For more information, visit [www.zebra.com](http://www.zebra.com) or contact a sales associate.

ZEBRA PORTFOLIO GUIDE | 2024



Zebra fixed industrial scanners drive unprecedented efficiency with hands-free data capture and automation.



### FS10 Fixed Industrial Scanner

Easily track and trace items as they move through warehouses and distribution centers with this compact, fits-anywhere, plug-and-play scanner.

- Enjoy first-time, every-time data capture with Zebra-exclusive features
- Connect to the USB port of a workstation, laptop, tablet or any other host device



### FS20 Fixed Industrial Scanner

Zebra's smallest networkable fixed industrial scanner integrates high-quality scanning to track and trace every item moving through production, storage and fulfillment.

- Integrate easily into PLCs or host networks using multiple connectivity options
- Reduce setup complexity and cost with support for Power-over-Ethernet (PoE)



### FS40 Fixed Industrial Scanner

Broad capabilities meet complex barcode capture requirements and can be tailored to specific needs, with flexible options like decode range, illumination, connectivity and power.

- Isolate production data and store images in the cloud or on a local server with two available Ethernet ports
- Capture up to 16 different images of a single item—each with its own unique setting for focus, exposure, gain, illumination control and more—with ImagePerfect+



### FS70 Fixed Industrial Scanner

Completely customizable scanner facilitates challenging track-and-trace applications. Choose from a variety of C-mount external lens and lighting options to achieve the working range and field of view the application and environment require.

- Address complex imaging requirements with a range of customizable options for depth of field, reading distance and lighting requirements
- Built-in Ethernet/IP with Add-On Profile, PROFINET and other network protocols enables painless integration with common PLCs or host systems

**See more** of what's happening on the production line or conveyor with a best-in-class machine vision toolset that helps eliminate errors and increase performance.





## Smart Sensors and Cameras

Reduce production defects, increase throughput and improve efficiency with Zebra's smart sensors and cameras. Cutting-edge machine vision technology delivers unmatched precision to warehouse or manufacturing operations. Whether your production line needs simple image capture or complex inspections, Zebra has a smart sensor or camera that's perfect for the job.



Read this white paper  
examining applications for  
machine vision technologies  
in manufacturing and logistics.



### Iris GTX

#### Machine vision and deep learning edge IoT device

Fast high-resolution image sensing, efficient dual-core embedded processing, and comprehensive I/O capabilities in a rugged smart camera.

- Leverage on-device image acquisition and analytics
- Pair with Aurora Design Assistant software to form an all-in-one vision system



### Machine vision

provides enhanced visibility into physical operations by delivering images and actionable intelligence to automation systems.



#### VS20 Machine Vision Smart Sensor

Multiple connectivity options easily integrate into a PLC or host network, enabling primary machine vision applications to feed all the processes that drive the business.

- Integrate easily with PLCs or host networks via Ethernet and serial ports
- Add machine vision tools or support for new barcode symbologies with a simple software upgrade



#### VS70 Machine Vision Smart Camera

Whether there is need for a wide-angle lens to capture large parts, a zoom lens to inspect distant components, or a specialized lens for precise measurements, this smart camera is completely customizable to any need.

- Reduce cost, training and management time, as well as the need for external peripherals, with Zebra-exclusive features
- Support any external C-mount lens and any external lighting solution



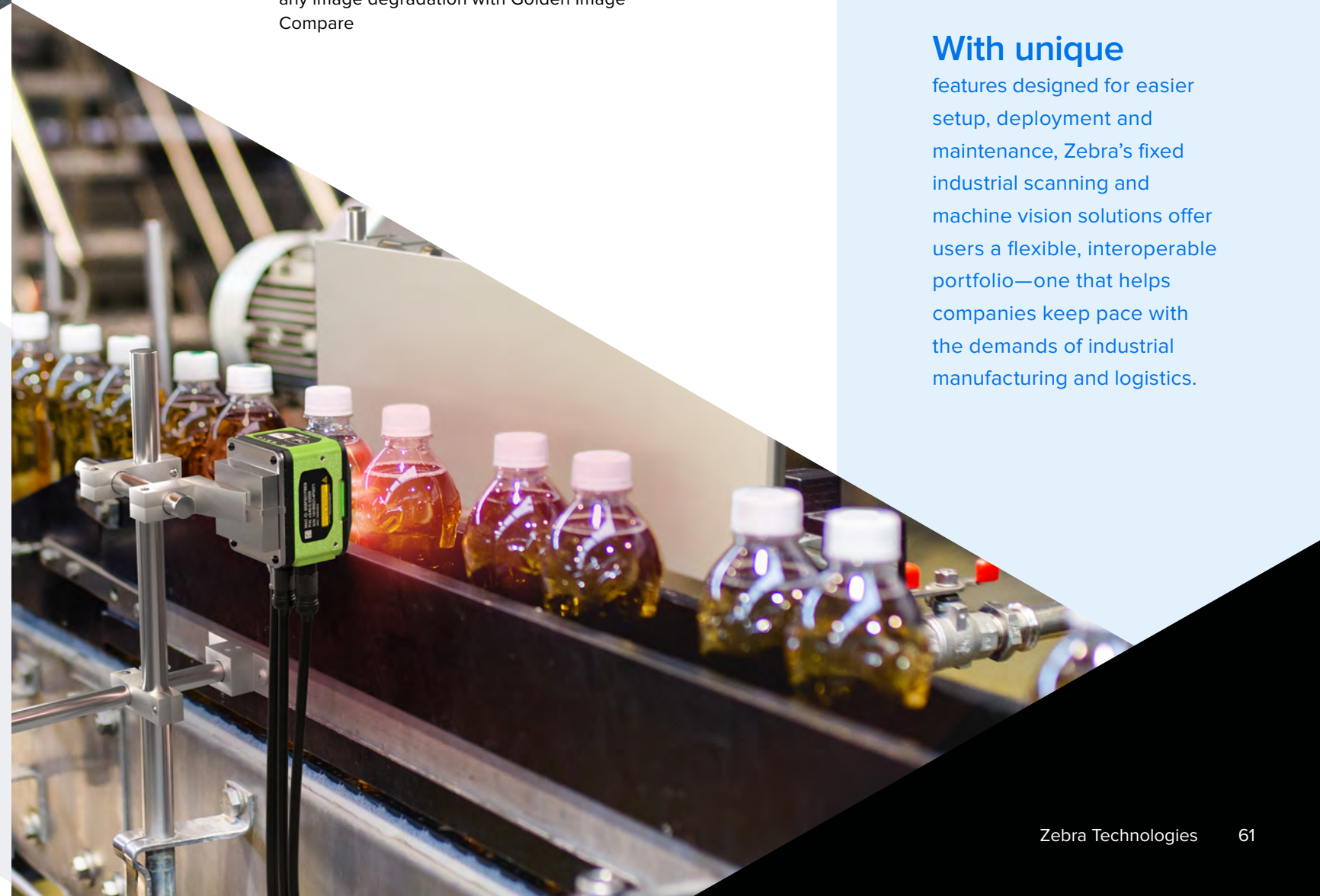
#### VS40 Machine Vision Smart Camera

A breadth of functionality supports a variety of inspection applications on the production line. Tailor this smart camera by choosing from a range of complementary lenses, illumination, connectivity, power and filters.

- Expand application functionality and improve error-proofing with up to nine programmable I/O ports
- Minimize downtime by immediately diagnosing and correcting the source of any image degradation with Golden Image Compare

### With unique

features designed for easier setup, deployment and maintenance, Zebra's fixed industrial scanning and machine vision solutions offer users a flexible, interoperable portfolio—one that helps companies keep pace with the demands of industrial manufacturing and logistics.





## 3D Sensors

Zebra's high-fidelity 3D profile sensors boast unique algorithms that automatically generate reliable 3D data in the form of profiles, depth maps or point clouds to suit any application requirement.



### AltiZ

Featuring a dual-camera single-laser design that reduces scanning gaps and voids and delivers exceptionally high 3D reproduction fidelity.

- Operate two cameras in tandem for maximum quality, or alternate for twice the scanning output
- Work with Zebra or third-party vision software thanks to a standard GigE Vision interface

## Vision Controllers

Embedded PC technology, expansion capabilities, optimized size and sturdiness mean Zebra's vision controllers are at home in manufacturing facilities, keeping watch over one or more production lines. Pair with add-in boards to handle image acquisition, network interface and processing offload demands for single high-speed or multi-camera imaging installations.



### Supersight

High-density industrial computing platforms accommodate up to four computers and a broad range of image-acquisition interfaces into a standard 4U enclosure, ideal for the factory floor.

- Scale system operations over one to four system host boards (SHBs) to optimize performance
- Split acquisition and processing over one, two or four compute clusters for optimized expansion capabilities



### 4Sight Series

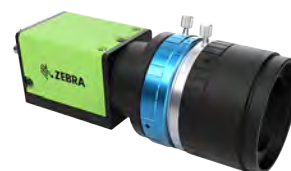
Desktop-level performance and substantial expansion capabilities for single high-rate or multi-camera imaging and machine vision applications. Zebra's industrial PCs are also suitable for traditional machine vision tasks and deep learning inference.

- Tackle the most demanding imaging applications with powerful embedded processors
- Connect to multiple cameras and boards



## Machine Vision Cameras

These color and monochrome cameras are built for multi-camera industrial inspection and automation applications.



### CV60

High-resolution machine vision cameras deliver outstanding frame rates.

- Pair with Zebra vision controllers or frame grabbers
- Keep critical inspections running optimally with cameras purpose-built for the factory floor

## Frame Grabbers

From cost-sensitive entry-level models to boards integrating flexible high-rate acquisition and pre-processing capabilities, or a range of inputs, interfaces and data rates, Zebra frame grabbers provide all the features necessary to make critical decisions with confidence and accuracy.



### Rapixo Series

Multi-input CoaXPress and Camera Link frame grabbers support the highest resolutions and frame rates currently available on the market.

- Connect to multiple high-performance cameras simultaneously
- Offload host computer of optional image processing demands via an FPGA device



### Clarity UHD

Multi-format, multi-input video capture cards handle onboard multi-stream H.264 encoding to optimize video transmission and storage.

- Capture SD, HD and UHD video formats
- Handle multiple video sources of up to eight HD or two UHD streams



### Concord PoE

Multi-port Gigabit Ethernet adaptors interface with one or more GigE Vision cameras, handle command and streaming protocols, and provide power over a single standard connection.

- Interface to one or more GigE Vision cameras supporting PoE
- Trigger multiple cameras simultaneously with hardware-assisted Trigger-over-Ethernet (ToE)



### Radiant eV-CL

High-performance frame grabbers handle image capture from a single Camera Link device and connect to high-performance Camera Link cameras to best achieve imaging needs while simplifying overall setup.

- Optimize multi-camera setups
- Simplify connectivity and maintain maximum throughput at extended cable lengths



### GevIQ

Smart network interface cards (NICs) handle generic GigE Vision acquisition offload at speeds up to 25 Gigabits/s per port, ensuring a more versatile alternative to custom-built or proprietary solutions based on 10+ GbE.

- Acquire high-bandwidth streams from two 25 GbE ports, with GigE Vision packet processing performed directly onboard
- Aggregate multiple GbE cameras for up to 32 input sources

## I/O Cards

Indio cards provide industrial I/O and communication capabilities that allow users to turn any PC running Aurora Imaging Library or Aurora Design Assistant vision software into a genuine vision controller.



### Indio

Multi-input I/O cards with hardware-enabled real-time synchronization with automation devices.

- Range of industrial I/O with eight discrete inputs and outputs per board
- Synchronize in real time via a dedicated hardware-assisted mechanism





## Zebra Aurora™ Software Suite

The Zebra Aurora suite of industrial automation software enables users of all experience levels to solve their track-and-trace and vision inspection needs. Experienced users will appreciate how easy it is to develop, refine and customize jobs, while first-time users can take advantage of interactive, step-by-step guidance to develop powerful applications for a wide range of industries.

**Zebra  
Aurora™**

### Aurora Focus

Aurora Focus runs on Zebra's fixed industrial scanners and VS20/VS40/VS70 smart cameras and comes ready-made for specific tasks like barcode reading and verification, OCR, and presence/absence vision inspection.

- One powerful tool controls all enterprise-wide automation solutions
- On-demand Zebra-only features like ImagePerfect+, Golden Image Compare, Object Locate and more

### Aurora Imaging Library

Aurora Imaging Library machine-vision software development kit (SDK) offers code-level customization and a deep collection of tools for image capture, processing, analysis, annotation, display and archiving.

- End-to-end coverage with utilities to optimize performance, shorten ramp-up time and improve outcomes
- Single, portable API can move between interfaces or OS to best protect the original investment

### Aurora Vision Library

Designed for experienced programmers proficient in vision applications, Aurora Vision Library provides sophisticated functionality presented in programming language.

- Totally customizable software affords complete control over vision applications
- Save time with code-generator capabilities to streamline programming projects



Read this case study about how Aurora Design Assistant helped an automotive component manufacturer improve their quality assessment processes.

### Aurora Design Assistant

Aurora Design Assistant is a flowchart-based platform for building machine vision applications, with templates to speed up development and bring solutions online quicker.

- Hardware-independent environment supports branded and third-party smart cameras, vision controllers and PCs
- Communicate actions and results to automation equipment in real time with discrete I/Os and supported protocols

### Aurora Vision Studio

Aurora Vision Studio software enables users to quickly create, integrate and monitor powerful machine vision applications without the need to write a single line of code.

- Includes a set of over 1,000 proven and ready-to-use filters to support a simple, three-step workflow
- Hardware agnostic, it also includes 3D capabilities for complex vision tasks



## Environmental Responsibility and Sustainability

Zebra takes environmental responsibility seriously, and places sustainability at the heart of our product portfolio. These are some of the ways we're delivering on the promise of sustainability that we've made to our customers through purpose-built hardware, software and cloud analytics.



Watch this video about a decarbonization pilot for the U.S. Department of Energy.

### Reducing Carbon Footprints

Our approved science-based targets (SBT) help our customers lower their carbon emissions. We prioritize carbon reductions using data from product life cycle assessments.

- **50%** ten-year absolute carbon emission reduction at Zebra sites.
- **15%** carbon emission reduction in supplier manufacturing and customer product use by 2030.



The Zebra MP7000 scanner consumes up to 60% less power than competing devices

### Lower Energy Use

We're helping our customers reduce electricity use.

- **~94%** of our eligible products meet ENERGY STAR® requirements.
- Our data capture products reduce energy use with LED and integrated ASID designs.
- Our external power supply surpasses international requirements with a Level VI efficiency rating.

### Purpose-Driven Design

We deliver on performance and positive results.

- Accessible designs and ergonomic form factors support our customers' inclusion priorities.
- Our broad product portfolio and solution ecosystem drives sustainability objectives.

### Extending Product Life Cycles

Ruggedized designs, software security and proactive battery replacement enable longer life cycles and greater returns on investment, while end-of-life reuse and recycling helps minimize our environmental impact.

- Interchangeable designs such as shared charging cradles and batteries encourage reuse and enable a more circular economy.
- By the end of **2024**, we expect our circular economy to exceed one million devices through recycling, buy-back, and certified refurbished sales and rentals.



RFD40/RFD90 and  
TC53/TC58 cradle

### Minimal Packaging

We help customers achieve zero-landfill targets through multipack and eco-packaging.

- Utilizing fully recyclable corrugated packaging for key products.
- Simplifying packaging, such as **17%** slimmer touch computer packaging.
- Encouraging customer adoption of multipacks and returnable containers.

### Print Supplies

Innovative engineering helps reduce landfill waste.

- Industry-first compostable print cartridges for the small/home office market.
- Paper-based RFID inlay and label offerings.
- Linerless and dissolvable label offerings.





## Fetch AMRs\*

Zebra's portfolio of robotics automation solutions offers companies a competitive edge. Fetch autonomous mobile robots move independently across your facility to fulfill orders faster and automate time-consuming and repetitive material movement tasks so your skilled workers can focus on more meaningful work.



Find out how a leading distributor of automotive electrical components improved throughput by 25% when they switched from a conveyor system to using Fetch AMRs.



### Fetch100 Flex\*

Dynamically orchestrate workers and robots to increase pick productivity across multiple orders. With multiple options, highly adjustable shelves, and other accessories such as garment rods, Fetch100 Flex offers the most storage combinations for transporting picked orders.

- LED lighting along the robot helps guide workers where to place picked items.
- Picking workflows can be further enhanced using vision, voice or handheld devices.



## AMRs can help

make your customer returns process more efficient, quickly moving products of varying sizes and shapes from one destination to another, letting your employees focus on value-added activities.



For more information, visit [www.zebra.com](http://www.zebra.com) or contact a sales associate.



Find out the truth about AMR myths that need to be debunked.



### Fetch100 OEM Base\*

Create your own customized automation solution on our ready-to-go OEM mobile base.

Whether you're an integrator or software developer, the fully autonomous base makes it easy to develop, set up and deploy virtually any application.



### Fetch100 Shelf\*

This all-in-one AMR can transport a wide range of goods from bins to totes to packages or parts. Its fully configurable shelving system and built-in touchscreen make it easy to integrate into any given workflow.



### Fetch100 Connect\*

Use any web-enabled or integrated device such as Zebra tablets or mobile computers to execute a workflow or request a pick-up. Fetch100 Connect will automatically move to the pick-up area and autonomously transport it to the selected drop-off area. Upon arrival, Fetch100 Connect automatically detaches from the cart and is ready for the next task, keeping workers productive in their zones.

- Available in three sizes, cart options support a wide range of workflows
- Simple setup and control for associates through handheld devices or fully configured schedules



### Fetch100 Roller\*

Bring flexibility to conveyor-driven environments. With adjustable height and autonomous navigation, Fetch100 Rollers can pilot their way to conveyors or ASRSs to load and unload totes and bins.

### Symmetry Software\*

Zebra Symmetry™ is a cloud-based software platform for your AMR fleet and automation workflows. Accessible from anywhere, Zebra Symmetry delivers simplicity, performance and ease of use for any operation that needs AMRs deployed. Effortlessly add robots and modify workflows with a few clicks of a button for rapid ROI.



**Prior to our AMRs,** which drop precisely where directed, an operator on a piece of material handling equipment (MHE) might forget the exact delivery location, or they might see that a stage is overflowed and drop it one or two stages over. This doesn't happen with our AMR deliveries."

– Sandra Grogg,  
Dorman Products OPEX Team







## Zebra Workcloud

Increase customer satisfaction with Zebra Workcloud. Its market-leading suites are purposefully developed to engage your employees, enable enterprise collaboration and optimize inventory management—from improving forecasting to streamlining replenishment. Each suite provides modular solutions ideal for your priorities and easy to scale. Look to Workcloud to support your modernization journey. Its connected intelligence will maximize the performance of your most valuable resources and deliver a superior customer experience.

## Zebra Workcloud™

### Workcloud Workforce Optimization Suite

Optimize labor costs, empower employees, improve productivity and maintain compliance. Create an agile operation that aligns scheduling to forecasted customer demand and execute real-time, prioritized tasks to drive sales and satisfied customers.

#### Workcloud Scheduling

Workcloud Scheduling helps you optimize labor schedules and budgets based on customer demand and workload to streamline operations and retain your next-gen workforce.

#### Workcloud Timekeeping

Workcloud Timekeeping helps you track time entry and labor to control costs and maintain compliance with labor laws and regulations. Accurate attendance records and real-time visibility across the enterprise help you maximize productivity on the front line.

#### Workcloud Task Management

Workcloud Task Management helps you improve sales by 1–3% when you simplify execution and communication with software solutions that automatically prioritize and allocate tasks to on-site employees.

### Workcloud Enterprise Collaboration Suite

Keep the front line connected and ready to do their best work. Give employees the ability to work in multiple roles and across departments via profiles preloaded with tasks and protocols. Your employees will have a direct line to ask for assistance, promptly tending to customers and answering their questions for a better experience that satisfies modern customer expectations.

#### Workcloud Communication

Workcloud Communication enables front-line teams to immediately find the information or resources they need to answer customer questions or complete an assignment. These communication tools have what your employees need to stay in touch, including push-to-talk, voice, profile management, analytics and more.

### Workcloud Inventory Optimization Suite

Satisfy customers and maximize profit potential by ensuring your inventory aligns with shifting demand and is both accurate and available for purchase. Sharpen inventory forecasting and planning with leading AI models that tap into more demand drivers. With our suite, you can keep the right mix of inventory on the shelves for higher turnover and fulfillment at less cost.

#### Workcloud Actionable Intelligence

Let Workcloud Actionable Intelligence uncover cost-saving opportunities from your data and send course-corrective actions to your front line, helping you recover more losses and capture more sales.

#### Workcloud Inventory Visibility

Move away from third-party inventory services and achieve 25–50% in cost savings when you perform your own physical inventory counts. With meticulous guidance at every step, Workcloud Inventory Visibility makes it easier to plan, faster to execute, and much more accurate.

#### Workcloud Inventory Planning—powered by antuit

Connect pre-season planning to in-season execution to maximize visibility, mitigate risks and drive organizational collaboration. AI maximizes your omnichannel ROI across purchasing, placement and pricing decisions to drive consumer adoption, resulting in increased profitability and greater consumer satisfaction.

Software solutions may differ by country. Contact your Zebra Sales representative for details.



For more information, visit [www.zebra.com](http://www.zebra.com) or contact a sales associate.

#### Workcloud Inventory Ordering—powered by antuit

Stay ahead of industry trends and achieve remarkable precision in inventory ordering and execution for on-time fulfillment, reduction of out-of-stocks, and alignment to consumer demand for your allocated shelf space. Drive perfect orders aligned with best-in-class forecasting to reduce lost sales, returns and waste.

### Workcloud Demand Intelligence Suite

Experience the power of the Workcloud Demand Intelligence Suite, leveraging cutting-edge AI and ML (machine learning) technologies to accurately forecast and analyze demand to meet various challenges across your organization. With advanced analytical capabilities, the suite enables businesses to anticipate consumer trends to make informed decisions for driving revenue and customer satisfaction and capturing more market share.

#### Workcloud Forecasting and Analysis

Empower transformation with no-code/low-code interfaces and a library of proven algorithms designed to address retail use cases across forecasting, demand sensing, optimization and more. Configure science to meaningful business value while providing analysis tools that unify demand intelligence for easier consumption.



Read success stories of how customers across industries used Zebra Workcloud to improve operations and customer experience.

## Zebra Workcloud

has native interoperability with Zebra devices, creating operational efficiency and elevating product availability by optimizing your most valuable resources: your workforce, inventory, time and funding.





## Global Services

Embarking on a technology transformation journey can be complex and costly. You must find ways to reduce business risk and speed up the process to realize ROI. Zebra Services will ensure that your new solution is better built, better managed, better adopted by employees, and launched to market quicker.\*

### Zebra Professional Services

Zebra Professional Services make it easier to integrate new technologies into your existing IT environments and workflows. Data insights from edge technologies can open up new business opportunities, but without the right skills or resources, you could miss out on the full benefits. Zebra Professional Services give you the expertise to optimize the adoption of edge-data solutions to run your business more productively.



Learn more about how Zebra Professional Services can help you innovate technology and maximize productivity.

### Zebra OneCare™ Maintenance Plans

Zebra OneCare™ Maintenance Plans are a comprehensive option that can help you protect your Zebra devices and keep them running at peak performance while maximizing uptime. The portfolio offers comprehensive coverage, advanced device replacement, on-site support and technical assistance. If needed, you can enhance them with battery maintenance, battery refresh and proactive battery replacement options. With our Maintenance Plans, you get access to VisibilityIQ OneCare™, a dashboard that allows you to track device repair and case trends, contract renewals, and LifeGuard™ security status.



Learn how to protect your devices above and beyond the manufacturer's warranty, including normal wear and tear and accidental damage with Zebra OneCare Support and Service.

### Zebra VisibilityIQ Foresight™

Zebra VisibilityIQ Foresight™ is a cloud-based solution that provides real-time visibility into the health and utilization of Zebra devices. It delivers actionable analytics that protect your device uptime and your workforce productivity by leveraging machine learning algorithms that analyze historical data and predict potential problems before they occur. The solution also provides color-coded insights and threshold alerts to help you quickly identify and address issues.



Learn how to get instant business intelligence about your Zebra devices with VisibilityIQ Foresight™.

### Circular Economy

Zebra is committed to responsible innovation and creating a better, greener future. The Circular Economy initiative aims to revolutionize the way technology is produced, used and disposed of. This includes initiatives such as refurbishment, buybacks and recycling, which can help extend the life cycle of Zebra devices and minimize environmental impact.



Learn more about how to put Zebra's Circular Economy Program to work for you.

\* Service availability, service feature and/or repair turnaround time may differ by country. Please contact your Zebra sales representative for details.

\*\* VisibilityIQ OneCare available for mobile computers and scanners only.







**UNIQUE  
MICRO  
DESIGN**  
...Engineering IoT Solutions

**ZEBRA** | Select  
Industrial Automation Partner

**ZEBRA** | **Solution Partner**  
RFID Specialist

**Unique Micro Design Pty Ltd**  
200 Wellington Road  
Clayton, VIC 3168, AUSTRALIA

+61 (0) 3-9582-7000  
sales@umd.com.au



**NA and Corporate Headquarters**  
+1 800 423 0442  
inquiry4@zebra.com

**Asia-Pacific Headquarters**  
+800 1302 028  
contact.apac@zebra.com

**EMEA Headquarters**  
zebra.com/locations  
contact.emea@zebra.com

**Latin America Headquarters**  
+1 866 230 9494  
la.contactme@zebra.com

ZEBRA and the stylized Zebra head are trademarks of Zebra Technologies Corp., registered in many jurisdictions worldwide. Android is a trademark of Google LLC. The Bluetooth word mark and logos are registered trademarks owned by Bluetooth SIG Inc. and any use of such marks by Zebra is under license. All other trademarks are the property of their respective owners. © 2023 Zebra Technologies Corp. and/or its affiliates. All rights reserved. 12/8/2023